

Datasheet for ABIN927943
anti-RENT2/UPF2 antibody (N-Term)



[Go to Product page](#)

1 Image

Overview

Quantity:	100 µL
Target:	RENT2/UPF2 (UPF2)
Binding Specificity:	N-Term
Reactivity:	Human
Host:	Rabbit
Clonality:	Polyclonal
Conjugate:	This RENT2/UPF2 antibody is un-conjugated
Application:	Western Blotting (WB)

Product Details

Immunogen:	UPF2 antibody was raised in rabbit using the N terminal of UPF2 as the immunogen
Purification:	Purified

Target Details

Target:	RENT2/UPF2 (UPF2)
Alternative Name:	UPF2 (UPF2 Products)
Background:	<p>This gene encodes a protein that is part of a post-splicing multiprotein complex involved in both mRNA nuclear export and mRNA surveillance. mRNA surveillance detects exported mRNAs with truncated open reading frames and initiates nonsense-mediated mRNA decay (NMD). When translation ends upstream from the last exon-exon junction, this triggers NMD to degrade mRNAs containing premature stop codons. This protein is located in the perinuclear area. It</p>

Target Details

interacts with translation release factors and the proteins that are functional homologs of yeast Upf1p and Upf3p. Two splice variants have been found for this gene, both variants encode the same protein. Synonyms: Polyclonal UPF2 antibody, Anti-UPF2 antibody, UPF2 regulator of nonsense transcripts homolog, yeast antibody, DKFZp434D222 antibody, HUPF2 antibody, KIAA1408 antibody, MGC138834 antibody, MGC138835 antibody, RENT2 antibody, smg-3 antibody.

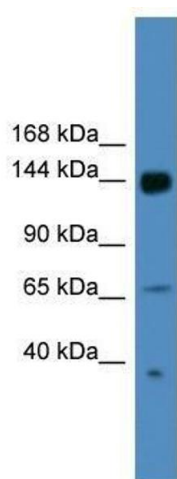
Application Details

Application Notes:	WB: 0.2-1 µg/mL Optimal conditions should be determined by the investigator.
Restrictions:	For Research Use only

Handling

Format:	Lyophilized
Concentration:	Lot specific
Buffer:	Lyophilized powder. Add 50 µL of distilled water. Final antibody concentration is 1 mg/mL in PBS buffer.
Handling Advice:	Avoid repeated freeze/thaw cycles.
Storage:	4 °C/-20 °C
Storage Comment:	Store at 4 °C, following reconstitution, aliquot and store at -20 °C.

Images



Western Blotting

Image 1. UPF2 antibody used at 0.2-1 ug/ml to detect target protein.