

Datasheet for ABIN927947
anti-CWC22 antibody (C-Term)



[Go to Product page](#)

1 Image

Overview

Quantity:	100 µL
Target:	CWC22
Binding Specificity:	C-Term
Reactivity:	Human
Host:	Rabbit
Clonality:	Polyclonal
Conjugate:	This CWC22 antibody is un-conjugated
Application:	Western Blotting (WB)

Product Details

Immunogen:	KIAA1604 antibody was raised in rabbit using the C terminal of KIAA1604 as the immunogen
Purification:	Purified

Target Details

Target:	CWC22
Abstract:	CWC22 Products
Background:	KIAA1604 may be involved in pre-mRNA splicing. Synonyms: Polyclonal KIAA1604 antibody, Anti-KIAA1604 antibody, CWC22 spliceosome-associated protein homolog, <i>S. cerevisiae</i> antibody, EIF4GL antibody, KIAA1604 antibody, NCM antibody, fSAPb antibody.

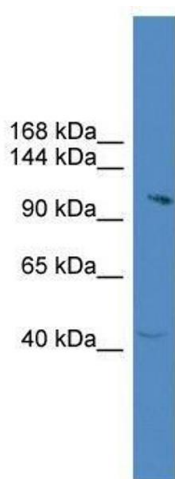
Application Details

Application Notes:	WB: 0.2-1 µg/mL Optimal conditions should be determined by the investigator.
Comment:	KIAA1604 Blocking Peptide, catalog no. 33R-8191, is also available for use as a blocking control in assays to test for specificity of this KIAA1604 antibody
Restrictions:	For Research Use only

Handling

Format:	Lyophilized
Concentration:	Lot specific
Buffer:	Lyophilized powder. Add 50 µL of distilled water. Final antibody concentration is 1 mg/mL in PBS buffer.
Handling Advice:	Avoid repeated freeze/thaw cycles.
Storage:	4 °C/-20 °C
Storage Comment:	Store at 4 °C, following reconstitution, aliquot and store at -20 °C.

Images



Western Blotting

Image 1. KIAA1604 antibody used at 0.2-1 ug/ml to detect target protein.