

Datasheet for ABIN927949
anti-RBM18 antibody (Middle Region)



[Go to Product page](#)

1 Image

Overview

Quantity:	100 µL
Target:	RBM18
Binding Specificity:	Middle Region
Reactivity:	Human
Host:	Rabbit
Clonality:	Polyclonal
Conjugate:	This RBM18 antibody is un-conjugated
Application:	Western Blotting (WB)

Product Details

Immunogen:	RBM18 antibody was raised in rabbit using the middle region of RBM18 as the immunogen
Purification:	Purified

Target Details

Target:	RBM18
Alternative Name:	RBM18 (RBM18 Products)
Background:	The function of RBM18 remains unknown. Synonyms: Polyclonal RBM18 antibody, Anti-RBM18 antibody, RNA binding motif protein 18 antibody, MGC2734 antibody.

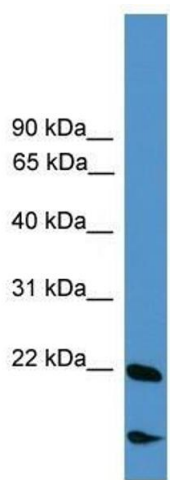
Application Details

Application Notes:	WB: 0.2-1 µg/mL Optimal conditions should be determined by the investigator.
Comment:	RBM18 Blocking Peptide, catalog no. 33R-9793, is also available for use as a blocking control in assays to test for specificity of this RBM18 antibody
Restrictions:	For Research Use only

Handling

Format:	Lyophilized
Concentration:	Lot specific
Buffer:	Lyophilized powder. Add 50 µL of distilled water. Final antibody concentration is 1 mg/mL in PBS buffer.
Handling Advice:	Avoid repeated freeze/thaw cycles.
Storage:	4 °C/-20 °C
Storage Comment:	Store at 4 °C, following reconstitution, aliquot and store at -20 °C.

Images



Western Blotting

Image 1. RBM18 antibody used at 0.2-1 ug/ml to detect target protein.