

Datasheet for ABIN927962
anti-SLC13A3 antibody (C-Term)



[Go to Product page](#)

1 Image

Overview

Quantity:	100 µL
Target:	SLC13A3
Binding Specificity:	C-Term
Reactivity:	Human
Host:	Rabbit
Clonality:	Polyclonal
Conjugate:	This SLC13A3 antibody is un-conjugated
Application:	Western Blotting (WB)

Product Details

Immunogen:	SLC13 A3 antibody was raised in rabbit using the C terminal of SLC13 3 as the immunogen
Purification:	Purified

Target Details

Target:	SLC13A3
Alternative Name:	SLC13A3 (SLC13A3 Products)
Background:	Mammalian sodium-dicarboxylate cotransporters transport succinate and other Krebs cycle intermediates. They fall into 2 categories based on their substrate affinity: low affinity and high affinity. Both the low- and high-affinity transporters play an important role in the handling of citrate by the kidneys. SLC13A3 represents the high-affinity form. Synonyms: Polyclonal SLC13A3 antibody, Anti-SLC13A3 antibody, solute carrier family 13, sodium-dependent

Target Details

dicarboxylate transporter, member 3 antibody, NADC3 antibody, SDCT2 antibody.

Pathways: [Dicarboxylic Acid Transport](#)

Application Details

Application Notes: WB: 0.2-1 µg/mL
Optimal conditions should be determined by the investigator.

Comment: SLC13A3 Blocking Peptide, catalog no. 33R-3424, is also available for use as a blocking control in assays to test for specificity of this SLC13A3 antibody

Restrictions: For Research Use only

Handling

Format: Lyophilized

Concentration: Lot specific

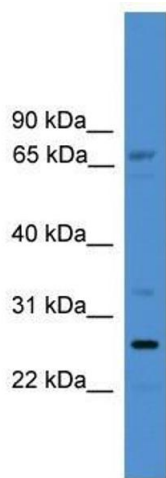
Buffer: Lyophilized powder. Add 50 µL of distilled water. Final antibody concentration is 1 mg/mL in PBS buffer.

Handling Advice: Avoid repeated freeze/thaw cycles.

Storage: 4 °C/-20 °C

Storage Comment: Store at 4 °C, following reconstitution, aliquot and store at -20 °C.

Images



Western Blotting

Image 1. SLC13A3 antibody used at 0.2-1 ug/ml to detect target protein.