

## Datasheet for ABIN927966 **anti-MARCO antibody (C-Term)**



[Go to Product page](#)

### 1 Image

#### Overview

Quantity:	100 µL
Target:	MARCO
Binding Specificity:	C-Term
Reactivity:	Human
Host:	Rabbit
Clonality:	Polyclonal
Conjugate:	This MARCO antibody is un-conjugated
Application:	Western Blotting (WB)

#### Product Details

Immunogen:	MARCO antibody was raised in rabbit using the C terminal of MARCO as the immunogen
Purification:	Purified

#### Target Details

Target:	MARCO
Alternative Name:	MARCO ( <a href="#">MARCO Products</a> )
Background:	The protein encoded by this gene is a member of the class A scavenger receptor family and is part of the innate antimicrobial immune system. The protein may bind both Gram-negative and Gram-positive bacteria via an extracellular, C-terminal, scavenger receptor cysteine-rich (SRCR) domain. In addition to short cytoplasmic and transmembrane domains, there is an extracellular spacer domain and a long, extracellular collagenous domain. The protein may form a trimeric

## Target Details

molecule by the association of the collagenous domains of three identical polypeptide chains.

Synonyms: Polyclonal MARCO antibody, Anti-MARCO antibody, macrophage receptor with collagenous structure antibody, SCARA2 antibody.

Pathways: [Activation of Innate immune Response](#)

## Application Details

Application Notes: WB: 0.2-1 µg/mL  
Optimal conditions should be determined by the investigator.

Comment: MARCO Blocking Peptide, catalog no. 33R-3464, is also available for use as a blocking control in assays to test for specificity of this MARCO antibody

Restrictions: For Research Use only

## Handling

Format: Lyophilized

Concentration: Lot specific

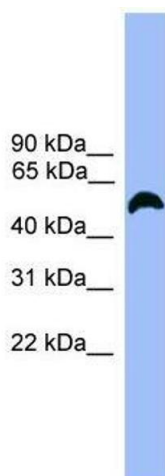
Buffer: Lyophilized powder. Add 50 µL of distilled water. Final antibody concentration is 1 mg/mL in PBS buffer.

Handling Advice: Avoid repeated freeze/thaw cycles.

Storage: 4 °C/-20 °C

Storage Comment: Store at 4 °C, following reconstitution, aliquot and store at -20 °C.

## Images



### Western Blotting

**Image 1.** Western Blot showing MARCO antibody used at a concentration of 1-2 µg/ml to detect its target protein.