

Datasheet for ABIN927980 **anti-CPA3 antibody (N-Term)**



[Go to Product page](#)

1 Image

Overview

Quantity:	100 µL
Target:	CPA3
Binding Specificity:	N-Term
Reactivity:	Human, Mouse
Host:	Rabbit
Clonality:	Polyclonal
Conjugate:	This CPA3 antibody is un-conjugated
Application:	Western Blotting (WB)

Product Details

Immunogen:	Cpa3 antibody was raised in rabbit using the N terminal of Cpa3 as the immunogen
Cross-Reactivity:	Mouse (Murine)
Purification:	Purified

Target Details

Target:	CPA3
Alternative Name:	Cpa3 (CPA3 Products)
Background:	Three different forms of human pancreatic procarboxypeptidase A have been isolated. This gene encodes a form which is obtained as a binary complex of a procarboxypeptidase A with proproteinase E and functions as a secretory granule metalloexopeptidase. Synonyms: Polyclonal Cpa3 antibody, Anti-Cpa3 antibody, carboxypeptidase A3, mast cell antibody, MC-

Target Details

CPA antibody, mMC-CPA antibody.

Pathways: [Peptide Hormone Metabolism, Regulation of Systemic Arterial Blood Pressure by Hormones](#)

Application Details

Application Notes: WB: 0.2-1 µg/mL
Optimal conditions should be determined by the investigator.

Comment: Cpa3 Blocking Peptide, catalog no. 33R-4047, is also available for use as a blocking control in assays to test for specificity of this Cpa3 antibody

Restrictions: For Research Use only

Handling

Format: Lyophilized

Concentration: Lot specific

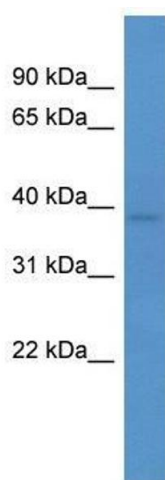
Buffer: Lyophilized powder. Add 50 µL of distilled water. Final antibody concentration is 1 mg/mL in PBS buffer.

Handling Advice: Avoid repeated freeze/thaw cycles.

Storage: 4 °C/-20 °C

Storage Comment: Store at 4 °C, following reconstitution, aliquot and store at -20 °C.

Images



Western Blotting

Image 1. Cpa3 antibody used at 0.2-1 ug/ml to detect target protein.