

## Datasheet for ABIN927985 **anti-SEMG2 antibody (N-Term)**



[Go to Product page](#)

### 1 Image

#### Overview

Quantity:	100 µL
Target:	SEMG2
Binding Specificity:	N-Term
Reactivity:	Human
Host:	Rabbit
Clonality:	Polyclonal
Conjugate:	This SEMG2 antibody is un-conjugated
Application:	Western Blotting (WB)

#### Product Details

Immunogen:	SEMG2 antibody was raised in rabbit using the N terminal of SEMG2 as the immunogen
Purification:	Purified

#### Target Details

Target:	SEMG2
Alternative Name:	SEMG2 ( <a href="#">SEMG2 Products</a> )
Background:	The secreted protein encoded by this gene is involved in the formation of a gel matrix that encases ejaculated spermatozoa. Proteolysis by the prostate-specific antigen (PSA) breaks down the gel matrix and allows the spermatozoa to move more freely. The encoded protein is found in lesser abundance than a similar semenogelin protein. The genes encoding these two semenogelin proteins are found in a cluster on chromosome 20. Synonyms: Polyclonal SEMG2

## Target Details

antibody, Anti-SEMG2 antibody, semenogelin II antibody, SGII antibody.

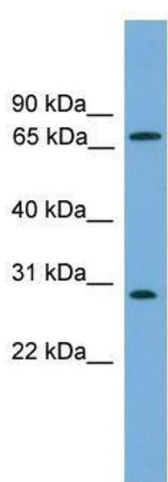
## Application Details

Application Notes:	WB: 0.2-1 µg/mL Optimal conditions should be determined by the investigator.
Comment:	SEMG2 Blocking Peptide, catalog no. 33R-3498, is also available for use as a blocking control in assays to test for specificity of this SEMG2 antibody
Restrictions:	For Research Use only

## Handling

Format:	Lyophilized
Concentration:	Lot specific
Buffer:	Lyophilized powder. Add 50 µL of distilled water. Final antibody concentration is 1 mg/mL in PBS buffer.
Handling Advice:	Avoid repeated freeze/thaw cycles.
Storage:	4 °C/-20 °C
Storage Comment:	Store at 4 °C, following reconstitution, aliquot and store at -20 °C.

## Images



### Western Blotting

**Image 1.** Western Blot showing SEMG2 antibody used at a concentration of 1-2 µg/ml to detect its target protein.