

Datasheet for ABIN927989 **anti-PSCA antibody (C-Term)**



[Go to Product page](#)

1 Image

Overview

Quantity:	100 µL
Target:	PSCA
Binding Specificity:	C-Term
Reactivity:	Human
Host:	Rabbit
Clonality:	Polyclonal
Conjugate:	This PSCA antibody is un-conjugated
Application:	Western Blotting (WB)

Product Details

Immunogen:	PSCA antibody was raised in rabbit using the C terminal of PSCA as the immunogen
Purification:	Purified

Target Details

Target:	PSCA
Alternative Name:	PSCA (PSCA Products)
Background:	This gene encodes a glycosylphosphatidylinositol-anchored cell membrane glycoprotein. In addition to being highly expressed in the prostate it is also expressed in the bladder, placenta, colon, kidney, and stomach. This gene is up-regulated in a large proportion of prostate cancers and is also detected in cancers of the bladder and pancreas. Synonyms: Polyclonal PSCA antibody, Anti-PSCA antibody, prostate stem cell antigen antibody, PRO232 antibody.

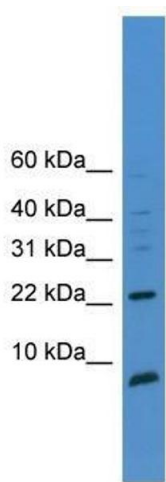
Application Details

Application Notes:	WB: 0.2-1 µg/mL Optimal conditions should be determined by the investigator.
Comment:	PSCA Blocking Peptide, catalog no. 33R-9358, is also available for use as a blocking control in assays to test for specificity of this PSCA antibody
Restrictions:	For Research Use only

Handling

Format:	Lyophilized
Concentration:	Lot specific
Buffer:	Lyophilized powder. Add 50 µL of distilled water. Final antibody concentration is 1 mg/mL in PBS buffer.
Handling Advice:	Avoid repeated freeze/thaw cycles.
Storage:	4 °C/-20 °C
Storage Comment:	Store at 4 °C, following reconstitution, aliquot and store at -20 °C.

Images



Western Blotting

Image 1. Western Blot showing PSCA antibody used at a concentration of 1-2 µg/ml to detect its target protein.