

Datasheet for ABIN927991
anti-GAL4 antibody (C-Term)



[Go to Product page](#)

1 Image

Overview

Quantity:	100 µL
Target:	GAL4 (LGALS4)
Binding Specificity:	C-Term
Reactivity:	Human, Mouse
Host:	Rabbit
Clonality:	Polyclonal
Conjugate:	This GAL4 antibody is un-conjugated
Application:	Western Blotting (WB)

Product Details

Immunogen:	Lgals4 antibody was raised in rabbit using the C terminal of Lgals4 as the immunogen
Cross-Reactivity:	Mouse (Murine)
Purification:	Purified

Target Details

Target:	GAL4 (LGALS4)
Alternative Name:	Lgals4 (LGALS4 Products)
Background:	Lgals4 binds lactose and a related range of sugars. Synonyms: Polyclonal Lgals4 antibody, Anti-Lgals4 antibody, lectin, galactose binding, soluble 4 antibody, galectin-4 antibody.

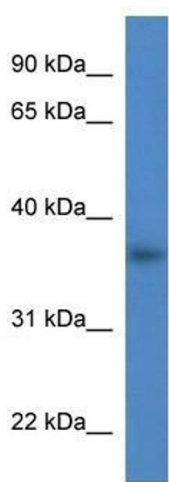
Application Details

Application Notes:	WB: 0.2-1 µg/mL Optimal conditions should be determined by the investigator.
Comment:	Lgals4 Blocking Peptide, catalog no. 33R-9572, is also available for use as a blocking control in assays to test for specificity of this Lgals4 antibody
Restrictions:	For Research Use only

Handling

Format:	Lyophilized
Concentration:	Lot specific
Buffer:	Lyophilized powder. Add 50 µL of distilled water. Final antibody concentration is 1 mg/mL in PBS buffer.
Handling Advice:	Avoid repeated freeze/thaw cycles.
Storage:	4 °C/-20 °C
Storage Comment:	Store at 4 °C, following reconstitution, aliquot and store at -20 °C.

Images



Western Blotting

Image 1. Western Blot showing Lgals4 antibody used at a concentration of 1-2 ug/ml to detect its target protein.