

Datasheet for ABIN927992 **anti-GLYT1 antibody (C-Term)**



[Go to Product page](#)

1 Image

Overview

Quantity:	100 µL
Target:	GLYT1
Binding Specificity:	C-Term
Reactivity:	Human, Mouse
Host:	Rabbit
Clonality:	Polyclonal
Conjugate:	This GLYT1 antibody is un-conjugated
Application:	Western Blotting (WB)

Product Details

Immunogen:	Slc6 a9 antibody was raised in rabbit using the C terminal of Slc6 9 as the immunogen
Cross-Reactivity:	Mouse (Murine)
Purification:	Purified

Target Details

Target:	GLYT1
Alternative Name:	Slc6a9 (GLYT1 Products)
Background:	Slc6a9 terminates the action of glycine by its high affinity sodium-dependent reuptake into presynaptic terminals. It may play a role in regulation of glycine levels in NMDA receptor-mediated neurotransmission. Synonyms: Polyclonal Slc6a9 antibody, Anti-Slc6a9 antibody, solute carrier family 6, neurotransmitter transporter, glycine, member 9 antibody, Glyt-1

Target Details

antibody, Glyt1 antibody.

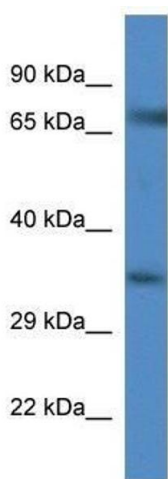
Application Details

Application Notes:	Optimal conditions should be determined by the investigator.
Comment:	Slc6a9 Blocking Peptide, catalog no. 33R-3034, is also available for use as a blocking control in assays to test for specificity of this Slc6a9 antibody
Restrictions:	For Research Use only

Handling

Format:	Lyophilized
Concentration:	Lot specific
Buffer:	Lyophilized powder. Add 50 μ L of distilled water. Final antibody concentration is 1 mg/mL in PBS buffer.
Handling Advice:	Avoid repeated freeze/thaw cycles.
Storage:	4 °C/-20 °C
Storage Comment:	Store at 4 °C, following reconstitution, aliquot and store at -20 °C.

Images



Western Blotting

Image 1. Western Blot showing Slc6a9 antibody used at a concentration of 1.0 μ g/ml against Mouse Spleen Lysate