

Datasheet for ABIN927994
anti-TMEM176B antibody (C-Term)



[Go to Product page](#)

1 Image

Overview

Quantity:	100 µL
Target:	TMEM176B
Binding Specificity:	C-Term
Reactivity:	Human
Host:	Rabbit
Clonality:	Polyclonal
Conjugate:	This TMEM176B antibody is un-conjugated
Application:	Western Blotting (WB)

Product Details

Immunogen:	TMEM176 B antibody was raised in rabbit using the C terminal of TMEM176 as the immunogen
Purification:	Purified

Target Details

Target:	TMEM176B
Alternative Name:	TMEM176B (TMEM176B Products)
Background:	TMEM176B may play a role in the process of maturation of dendritic cells. TMEM176B is required for the development of cerebellar granule cells. Synonyms: Polyclonal TMEM176B antibody, Anti-TMEM176B antibody, transmembrane protein 176B antibody, FLJ26014 antibody, LR8 antibody, MGC110857 antibody.

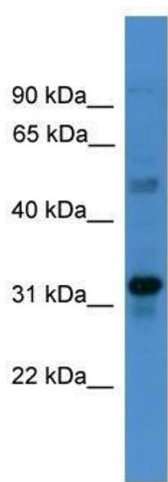
Application Details

Application Notes:	WB: 0.2-1 µg/mL Optimal conditions should be determined by the investigator.
Comment:	TMEM176B Blocking Peptide, catalog no. 33R-8633, is also available for use as a blocking control in assays to test for specificity of this TMEM176B antibody
Restrictions:	For Research Use only

Handling

Format:	Lyophilized
Concentration:	Lot specific
Buffer:	Lyophilized powder. Add 50 µL of distilled water. Final antibody concentration is 1 mg/mL in PBS buffer.
Handling Advice:	Avoid repeated freeze/thaw cycles.
Storage:	4 °C/-20 °C
Storage Comment:	Store at 4 °C, following reconstitution, aliquot and store at -20 °C.

Images



Western Blotting

Image 1. Western Blot showing TMEM176B antibody used at a concentration of 1-2 µg/ml to detect its target protein.