

Datasheet for ABIN927999  
**anti-GPR88 antibody (C-Term)**



[Go to Product page](#)

1 Image

## Overview

Quantity:	100 µL
Target:	GPR88
Binding Specificity:	C-Term
Reactivity:	Human, Rat
Host:	Rabbit
Clonality:	Polyclonal
Conjugate:	This GPR88 antibody is un-conjugated
Application:	Western Blotting (WB)

## Product Details

Immunogen:	Gpr88 antibody was raised in rabbit using the C terminal of Gpr88 as the immunogen
Cross-Reactivity:	Rat (Rattus)
Purification:	Purified

## Target Details

Target:	GPR88
Alternative Name:	Gpr88 ( <a href="#">GPR88 Products</a> )
Background:	Gpr88 is the orphan receptor. Synonyms: Polyclonal Gpr88 antibody, Anti-Gpr88 antibody, G-protein coupled receptor 88 antibody, Gpr88 antibody.

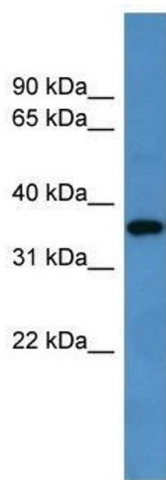
## Application Details

Application Notes:	WB: 0.2-1 µg/mL Optimal conditions should be determined by the investigator.
Comment:	Gpr88 Blocking Peptide, catalog no. 33R-5576, is also available for use as a blocking control in assays to test for specificity of this Gpr88 antibody
Restrictions:	For Research Use only

## Handling

Format:	Lyophilized
Concentration:	Lot specific
Buffer:	Lyophilized powder. Add 50 µL of distilled water. Final antibody concentration is 1 mg/mL in PBS buffer.
Handling Advice:	Avoid repeated freeze/thaw cycles.
Storage:	4 °C/-20 °C
Storage Comment:	Store at 4 °C, following reconstitution, aliquot and store at -20 °C.

## Images



### Western Blotting

**Image 1.** Western Blot showing Gpr88 antibody used at a concentration of 1-2 ug/ml to detect its target protein.