

Datasheet for ABIN928013 **anti-Ube2t antibody (N-Term)**



[Go to Product page](#)

1 Image

Overview

Quantity:	100 µL
Target:	Ube2t
Binding Specificity:	N-Term
Reactivity:	Human
Host:	Rabbit
Clonality:	Polyclonal
Conjugate:	This Ube2t antibody is un-conjugated
Application:	Western Blotting (WB)

Product Details

Immunogen:	UBE2 T antibody was raised in rabbit using the N terminal of UBE2 as the immunogen
Purification:	Purified

Target Details

Target:	Ube2t
Alternative Name:	UBE2T (Ube2t Products)
Background:	The covalent conjugation of ubiquitin to proteins regulates diverse cellular pathways and proteins. Ubiquitin is transferred to a target protein through a concerted action of a ubiquitin-activating enzyme (E1), a ubiquitin-conjugating enzyme (E2), such as UBE2T, and a ubiquitin ligase (E3). Synonyms: Polyclonal UBE2T antibody, Anti-UBE2T antibody, ubiquitin-conjugating enzyme E2T, putative antibody, HSPC150 antibody, PIG50 antibody.

Target Details

Pathways: [Chromatin Binding](#)

Application Details

Application Notes: WB: 0.2-1 µg/mL
Optimal conditions should be determined by the investigator.

Restrictions: For Research Use only

Handling

Format: Lyophilized

Concentration: Lot specific

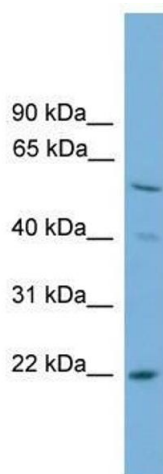
Buffer: Lyophilized powder. Add 50 µL of distilled water. Final antibody concentration is 1 mg/mL in PBS buffer.

Handling Advice: Avoid repeated freeze/thaw cycles.

Storage: 4 °C/-20 °C

Storage Comment: Store at 4 °C, following reconstitution, aliquot and store at -20 °C.

Images



Western Blotting

Image 1. Western Blot showing UBE2T antibody used at a concentration of 1-2 ug/ml to detect its target protein.