

Datasheet for ABIN928019

**anti-Deltex Homolog 3 antibody (C-Term)**[Go to Product page](#)**1** Image

## Overview

Quantity:	100 µL
Target:	Deltex Homolog 3 (DTX3)
Binding Specificity:	C-Term
Reactivity:	Human, Mouse
Host:	Rabbit
Clonality:	Polyclonal
Conjugate:	This Deltex Homolog 3 antibody is un-conjugated
Application:	Western Blotting (WB)

## Product Details

Immunogen:	Dtx3 antibody was raised in rabbit using the C terminal of Dtx3 as the immunogen
Cross-Reactivity:	Mouse (Murine)
Purification:	Purified

## Target Details

Target:	Deltex Homolog 3 (DTX3)
Alternative Name:	Dtx3 ( <a href="#">DTX3 Products</a> )
Background:	Dtx3 is a regulator of Notch signaling, a signaling pathway involved in cell-cell communications that regulates a broad spectrum of cell-fate determinations. Dtx3 probably acts both as a positive and negative regulator of Notch, depending on the developmental and cell context. Dtx3 functions as an ubiquitin ligase protein in vitro, suggesting that it may regulate the Notch

## Target Details

pathway via some ubiquitin ligase activity. Synonyms: Polyclonal Dtx3 antibody, Anti-Dtx3 antibody, deltex 3 homolog, Drosophila antibody, Deltex3 antibody, MGC106339 antibody, mg310 antibody.

Pathways: [Notch Signaling](#)

## Application Details

Application Notes: WB: 0.2-1 µg/mL  
Optimal conditions should be determined by the investigator.

Comment: Dtx3 Blocking Peptide, catalog no. 33R-10086, is also available for use as a blocking control in assays to test for specificity of this Dtx3 antibody

Restrictions: For Research Use only

## Handling

Format: Lyophilized

Concentration: Lot specific

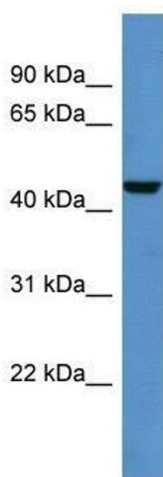
Buffer: Lyophilized powder. Add 50 µL of distilled water. Final antibody concentration is 1 mg/mL in PBS buffer.

Handling Advice: Avoid repeated freeze/thaw cycles.

Storage: 4 °C/-20 °C

Storage Comment: Store at 4 °C, following reconstitution, aliquot and store at -20 °C.

## Images



### Western Blotting

**Image 1.** Western Blot showing Dtx3 antibody used at a concentration of 1-2 µg/ml to detect its target protein.