

Datasheet for ABIN928020

**anti-TMEM176A antibody (N-Term)**[Go to Product page](#)**1** Image

## Overview

Quantity:	100 µL
Target:	TMEM176A
Binding Specificity:	N-Term
Reactivity:	Human
Host:	Rabbit
Clonality:	Polyclonal
Conjugate:	This TMEM176A antibody is un-conjugated
Application:	Western Blotting (WB)

## Product Details

Immunogen:	TMEM176 A antibody was raised in rabbit using the N terminal of TMEM176 as the immunogen
Purification:	Purified

## Target Details

Target:	TMEM176A
Alternative Name:	TMEM176A ( <a href="#">TMEM176A Products</a> )
Background:	The function of this protein remains unknown. Synonyms: Polyclonal TMEM176A antibody, Anti-TMEM176A antibody, transmembrane protein 176A antibody, GS188 antibody, HCA112 antibody.

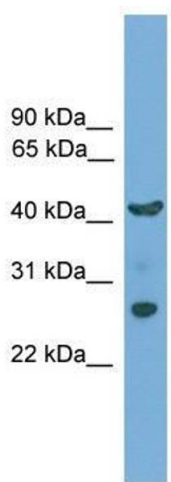
Application Details

Application Notes:	WB: 0.2-1 µg/mL Optimal conditions should be determined by the investigator.
Comment:	TMEM176A Blocking Peptide, catalog no. 33R-8993, is also available for use as a blocking control in assays to test for specificity of this TMEM176A antibody
Restrictions:	For Research Use only

Handling

Format:	Lyophilized
Concentration:	Lot specific
Buffer:	Lyophilized powder. Add 50 µL of distilled water. Final antibody concentration is 1 mg/mL in PBS buffer.
Handling Advice:	Avoid repeated freeze/thaw cycles.
Storage:	4 °C/-20 °C
Storage Comment:	Store at 4 °C, following reconstitution, aliquot and store at -20 °C.

Images



**Western Blotting**

**Image 1.** TMEM176A antibody used at 0.2-1 ug/ml to detect target protein.