

Datasheet for ABIN928024
anti-CCL17 antibody (N-Term)



[Go to Product page](#)

1 Image

Overview

Quantity:	100 µL
Target:	CCL17
Binding Specificity:	N-Term
Reactivity:	Human
Host:	Rabbit
Clonality:	Polyclonal
Conjugate:	This CCL17 antibody is un-conjugated
Application:	Western Blotting (WB)

Product Details

Immunogen:	ABCD2 antibody was raised in rabbit using the N terminal of ABCD2 as the immunogen
Purification:	Purified

Target Details

Target:	CCL17
Alternative Name:	ABCD2 (CCL17 Products)
Background:	The protein encoded by this gene is a member of the superfamily of ATP-binding cassette (ABC) transporters. ABC proteins transport various molecules across extra- and intra-cellular membranes. ABC genes are divided into seven distinct subfamilies (ABC1, MDR/TAP, MRP, ALD, OABP, GCN20, White). This protein is a member of the ALD subfamily, which is involved in peroxisomal import of fatty acids and/or fatty acyl-CoAs in the organelle. All known

Target Details

peroxisomal ABC transporters are half transporters which require a partner half transporter molecule to form a functional homodimeric or heterodimeric transporter. Synonyms: Polyclonal ABCD2 antibody, Anti-ABCD2 antibody, ATP-binding cassette, sub-family D, ALD, member 2 antibody, ABC39 antibody, ALDL1 antibody, ALDR antibody, ALDRP antibody, hALDR antibody.

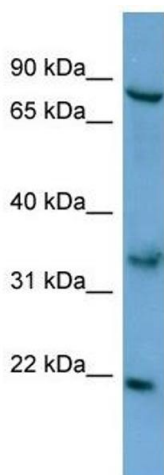
Application Details

Application Notes:	WB: 0.2-1 µg/mL Optimal conditions should be determined by the investigator.
Comment:	ABCD2 Blocking Peptide, catalog no. 33R-2927, is also available for use as a blocking control in assays to test for specificity of this ABCD2 antibody
Restrictions:	For Research Use only

Handling

Format:	Lyophilized
Concentration:	Lot specific
Buffer:	Lyophilized powder. Add 50 µL of distilled water. Final antibody concentration is 1 mg/mL in PBS buffer.
Handling Advice:	Avoid repeated freeze/thaw cycles.
Storage:	4 °C/-20 °C
Storage Comment:	Store at 4 °C, following reconstitution, aliquot and store at -20 °C.

Images



Western Blotting

Image 1. ABCD2 antibody used at 0.2-1 µg/ml to detect target protein.