

Datasheet for ABIN928030
anti-SLC26A2 antibody (C-Term)



[Go to Product page](#)

1 Image

Overview

Quantity:	100 µL
Target:	SLC26A2
Binding Specificity:	C-Term
Reactivity:	Human, Mouse
Host:	Rabbit
Clonality:	Polyclonal
Conjugate:	This SLC26A2 antibody is un-conjugated
Application:	Western Blotting (WB)

Product Details

Immunogen:	Slc26 a2 antibody was raised in rabbit using the C terminal of Slc26 2 as the immunogen
Cross-Reactivity:	Mouse (Murine)
Purification:	Purified

Target Details

Target:	SLC26A2
Alternative Name:	Slc26a2 (SLC26A2 Products)
Background:	As a sulfate transporter, sSlc26a2 may play a role in endochondral bone formation. Synonyms: Polyclonal Slc26a2 antibody, Anti-Slc26a2 antibody, solute carrier family 26, sulfate transporter, member 2 antibody, Dtd antibody, ST-OB antibody.

Target Details

Pathways: [Glycosaminoglycan Metabolic Process](#), [Ribonucleoside Biosynthetic Process](#)

Application Details

Application Notes: Optimal conditions should be determined by the investigator.

Comment: Slc26a2 Blocking Peptide, catalog no. 33R-9814, is also available for use as a blocking control in assays to test for specificity of this Slc26a2 antibody

Restrictions: For Research Use only

Handling

Format: Lyophilized

Concentration: Lot specific

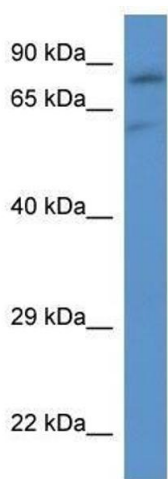
Buffer: Lyophilized powder. Add 50 μ L of distilled water. Final antibody concentration is 1 mg/mL in PBS buffer.

Handling Advice: Avoid repeated freeze/thaw cycles.

Storage: 4 °C/-20 °C

Storage Comment: Store at 4 °C, following reconstitution, aliquot and store at -20 °C.

Images



Western Blotting

Image 1. Western Blot showing Slc26a2 antibody used at a concentration of 1.0 μ g/ml against Mouse Heart Lysate