

Datasheet for ABIN928031

anti-SLC6A3 antibody (N-Term)



[Go to Product page](#)

1 Image

Overview

Quantity:	100 µL
Target:	SLC6A3
Binding Specificity:	N-Term
Reactivity:	Human
Host:	Rabbit
Clonality:	Polyclonal
Conjugate:	This SLC6A3 antibody is un-conjugated
Application:	Western Blotting (WB)

Product Details

Immunogen:	SLC6 A3 antibody was raised in rabbit using the N terminal of SLC6 3 as the immunogen
Purification:	Purified

Target Details

Target:	SLC6A3
Alternative Name:	SLC6A3 (SLC6A3 Products)
Background:	This gene encodes a dopamine transporter which is a member of the sodium- and chloride-dependent neurotransmitter transporter family. The 3' UTR of this gene contains a 40 bp tandem repeat, referred to as a variable number tandem repeat or VNTR, which can be present in 3 to 11 copies. Variation in the number of repeats is associated with idiopathic epilepsy, attention-deficit hyperactivity disorder, dependence on alcohol and cocaine, susceptibility to

Target Details

Parkinson disease and protection against nicotine dependence. Synonyms: Polyclonal SLC6A3 antibody, Anti-SLC6A3 antibody, solute carrier family 6, neurotransmitter transporter, dopamine, member 3 antibody, DAT antibody, DAT1 antibody.

Pathways: [Dopaminergic Neurogenesis](#)

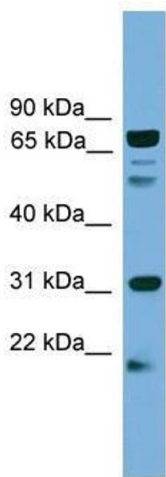
Application Details

Application Notes:	WB: 0.2-1 µg/mL Optimal conditions should be determined by the investigator.
Comment:	SLC6A3 Blocking Peptide, catalog no. 33R-3700, is also available for use as a blocking control in assays to test for specificity of this SLC6A3 antibody
Restrictions:	For Research Use only

Handling

Format:	Lyophilized
Concentration:	Lot specific
Buffer:	Lyophilized powder. Add 50 µL of distilled water. Final antibody concentration is 1 mg/mL in PBS buffer.
Handling Advice:	Avoid repeated freeze/thaw cycles.
Storage:	4 °C/-20 °C
Storage Comment:	Store at 4 °C, following reconstitution, aliquot and store at -20 °C.

Images



Western Blotting

Image 1. SLC6A3 antibody used at 0.2-1 ug/ml to detect target protein.