

Datasheet for ABIN928032
anti-SLC16A3 antibody (N-Term)



[Go to Product page](#)

1 Image

Overview

Quantity:	100 µL
Target:	SLC16A3
Binding Specificity:	N-Term
Reactivity:	Human, Mouse
Host:	Rabbit
Clonality:	Polyclonal
Conjugate:	This SLC16A3 antibody is un-conjugated
Application:	Western Blotting (WB)

Product Details

Immunogen:	Slc16 a3 antibody was raised in rabbit using the N terminal of Slc16 3 as the immunogen
Cross-Reactivity:	Mouse (Murine)
Purification:	Purified

Target Details

Target:	SLC16A3
Alternative Name:	Slc16a3 (SLC16A3 Products)
Background:	Slc16a3 is a proton-linked monocarboxylate transporter. It catalyzes the rapid transport across the plasma membrane of many monocarboxylates such as lactate, pyruvate, branched-chain oxo acids derived from leucine, valine and isoleucine, and the ketone bodies acetoacetate, beta-hydroxybutyrate and acetate. Synonyms: Polyclonal Slc16a3 antibody, Anti-Slc16a3 antibody,

Target Details

solute carrier family 16, monocarboxylic acid transporters, member 3 antibody, Mct3 antibody, Mct4 antibody.

Pathways: [Warburg Effect](#)

Application Details

Application Notes: Optimal conditions should be determined by the investigator.

Comment: Slc16a3 Blocking Peptide, catalog no. 33R-4265, is also available for use as a blocking control in assays to test for specificity of this Slc16a3 antibody

Restrictions: For Research Use only

Handling

Format: Lyophilized

Concentration: Lot specific

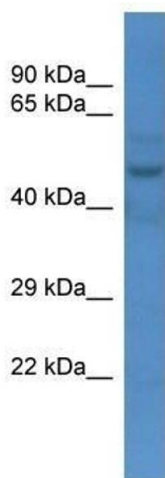
Buffer: Lyophilized powder. Add 50 μ L of distilled water. Final antibody concentration is 1 mg/mL in PBS buffer.

Handling Advice: Avoid repeated freeze/thaw cycles.

Storage: 4 °C/-20 °C

Storage Comment: Store at 4 °C, following reconstitution, aliquot and store at -20 °C.

Images



Western Blotting

Image 1. Western Blot showing Slc16a3 antibody used at a concentration of 1.0 μ g/ml against Mouse Liver Lysate