

Datasheet for ABIN928033 **anti-SLC7A3 antibody (Middle Region)**



[Go to Product page](#)

1 Image

Overview

Quantity:	100 µL
Target:	SLC7A3
Binding Specificity:	Middle Region
Reactivity:	Human, Mouse
Host:	Rabbit
Clonality:	Polyclonal
Conjugate:	This SLC7A3 antibody is un-conjugated
Application:	Western Blotting (WB)

Product Details

Immunogen:	Slc7 a3 antibody was raised in rabbit using the middle region of Slc7 3 as the immunogen
Cross-Reactivity:	Mouse (Murine)
Purification:	Purified

Target Details

Target:	SLC7A3
Alternative Name:	Slc7a3 (SLC7A3 Products)
Background:	Slc7a3 mediates the uptake of the cationic amino acids arginine, lysine and ornithine in a sodium-independent manner. Synonyms: Polyclonal Slc7a3 antibody, Anti-Slc7a3 antibody, solute carrier family 7, cationic amino acid transporter, y+ system, member 3 antibody, Atrc3 antibody, CAT3 antibody, SLC7A1 antibody, SLC7A2 antibody.

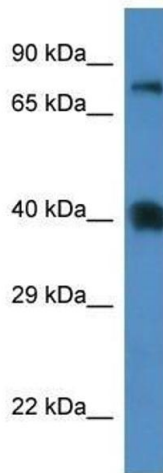
Application Details

Application Notes:	Optimal conditions should be determined by the investigator.
Comment:	Slc7a3 Blocking Peptide, catalog no. 33R-7832, is also available for use as a blocking control in assays to test for specificity of this Slc7a3 antibody
Restrictions:	For Research Use only

Handling

Format:	Lyophilized
Concentration:	Lot specific
Buffer:	Lyophilized powder. Add 50 μ L of distilled water. Final antibody concentration is 1 mg/mL in PBS buffer.
Handling Advice:	Avoid repeated freeze/thaw cycles.
Storage:	4 °C/-20 °C
Storage Comment:	Store at 4 °C, following reconstitution, aliquot and store at -20 °C.

Images



Western Blotting

Image 1. Western Blot showing Slc7a3 antibody used at a concentration of 1.0 μ g/ml against Mouse Spleen Lysate