

Datasheet for ABIN928035
anti-SLC25A27 antibody (C-Term)



[Go to Product page](#)

1 Image

Overview

Quantity:	100 µL
Target:	SLC25A27
Binding Specificity:	C-Term
Reactivity:	Human, Mouse
Host:	Rabbit
Clonality:	Polyclonal
Conjugate:	This SLC25A27 antibody is un-conjugated
Application:	Western Blotting (WB)

Product Details

Immunogen:	Slc25 a27 antibody was raised in rabbit using the C terminal of Slc25 27 as the immunogen
Cross-Reactivity:	Mouse (Murine)
Purification:	Purified

Target Details

Target:	SLC25A27
Alternative Name:	Slc25a27 (SLC25A27 Products)
Background:	The function of this protein remains unknown. Synonyms: Polyclonal Slc25a27 antibody, Anti-Slc25a27 antibody, solute carrier family 25, member 27 antibody, 3632410G24Rik antibody, 9430092A03Rik antibody, D530043E16Rik antibody, Ucp4 antibody.

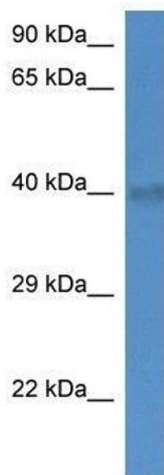
Application Details

Application Notes:	Optimal conditions should be determined by the investigator.
Comment:	Slc25a27 Blocking Peptide, catalog no. 33R-2320, is also available for use as a blocking control in assays to test for specificity of this Slc25a27 antibody
Restrictions:	For Research Use only

Handling

Format:	Lyophilized
Concentration:	Lot specific
Buffer:	Lyophilized powder. Add 50 μ L of distilled water. Final antibody concentration is 1 mg/mL in PBS buffer.
Handling Advice:	Avoid repeated freeze/thaw cycles.
Storage:	4 °C/-20 °C
Storage Comment:	Store at 4 °C, following reconstitution, aliquot and store at -20 °C.

Images



Western Blotting

Image 1. Western Blot showing Slc25a27 antibody used at a concentration of 1.0 μ g/ml against Mouse Brain Lysate