

Datasheet for ABIN928036
anti-SLC9A5 antibody (C-Term)



[Go to Product page](#)

1 Image

Overview

Quantity:	100 µL
Target:	SLC9A5
Binding Specificity:	C-Term
Reactivity:	Human, Mouse
Host:	Rabbit
Clonality:	Polyclonal
Conjugate:	This SLC9A5 antibody is un-conjugated
Application:	Western Blotting (WB)

Product Details

Immunogen:	Slc9 a5 antibody was raised in rabbit using the C terminal of Slc9 5 as the immunogen
Cross-Reactivity:	Mouse (Murine)
Purification:	Purified

Target Details

Target:	SLC9A5
Alternative Name:	Slc9a5 (SLC9A5 Products)
Background:	Slc9a5 is involved in pH regulation to eliminate acids generated by active metabolism or to counter adverse environmental conditions. Major proton extruding system driven by the inward sodium ion chemical gradient. Plays an important role in signal transduction. Synonyms: Polyclonal Slc9a5 antibody, Anti-Slc9a5 antibody, solute carrier family 9, sodium/hydrogen

Target Details

exchanger, member 5 antibody, Gm696 antibody.

Pathways: [Proton Transport](#)

Application Details

Application Notes: Optimal conditions should be determined by the investigator.

Comment: Slc9a5 Blocking Peptide, catalog no. 33R-8414, is also available for use as a blocking control in assays to test for specificity of this Slc9a5 antibody

Restrictions: For Research Use only

Handling

Format: Lyophilized

Concentration: Lot specific

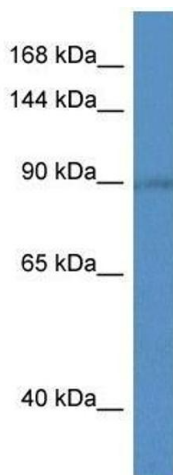
Buffer: Lyophilized powder. Add 50 μ L of distilled water. Final antibody concentration is 1 mg/mL in PBS buffer.

Handling Advice: Avoid repeated freeze/thaw cycles.

Storage: 4 $^{\circ}$ C/-20 $^{\circ}$ C

Storage Comment: Store at 4 $^{\circ}$ C, following reconstitution, aliquot and store at -20 $^{\circ}$ C.

Images



Western Blotting

Image 1. Western Blot showing Slc9a5 antibody used at a concentration of 1.0 μ g/ml against Mouse Brain Lysate