

Datasheet for ABIN928037  
**anti-SLC9A3R2 antibody (N-Term)**



[Go to Product page](#)

1 Image

## Overview

Quantity:	100 µL
Target:	SLC9A3R2
Binding Specificity:	N-Term
Reactivity:	Human, Rat
Host:	Rabbit
Clonality:	Polyclonal
Conjugate:	This SLC9A3R2 antibody is un-conjugated
Application:	Western Blotting (WB)

## Product Details

Immunogen:	Slc9 a9 2 antibody was raised in rabbit using the N terminal of Slc9 9 2 as the immunogen
Cross-Reactivity:	Rat (Rattus)
Purification:	Purified

## Target Details

Target:	SLC9A3R2
Alternative Name:	Slc9a3r2 ( <a href="#">SLC9A3R2 Products</a> )
Background:	Scaffold protein that connects plasma membrane proteins with members of the ezrin/moesin/radixin family and thereby helps to link them to the actin cytoskeleton and to regulate their surface expression. Slc9a3r2 is necessary for cAMP-mediated phosphorylation and inhibition of SLC9A3. It may also act as scaffold protein in the nucleus. Synonyms:

## Target Details

Polyclonal Slc9a3r2 antibody, Anti-Slc9a3r2 antibody, solute carrier family 9, sodium/hydrogen exchanger, member 3 regulator 2 antibody, E3karp antibody.

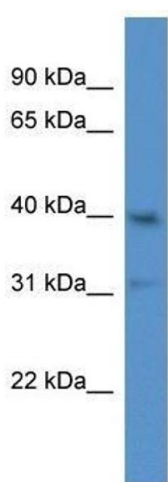
## Application Details

Application Notes:	Optimal conditions should be determined by the investigator.
Comment:	Slc9a3r2 Blocking Peptide, catalog no. 33R-8058, is also available for use as a blocking control in assays to test for specificity of this Slc9a3r2 antibody
Restrictions:	For Research Use only

## Handling

Format:	Lyophilized
Concentration:	Lot specific
Buffer:	Lyophilized powder. Add 50 $\mu$ L of distilled water. Final antibody concentration is 1 mg/mL in PBS buffer.
Handling Advice:	Avoid repeated freeze/thaw cycles.
Storage:	4 °C/-20 °C
Storage Comment:	Store at 4 °C, following reconstitution, aliquot and store at -20 °C.

## Images



### Western Blotting

**Image 1.** Western Blot showing Slc9a3r2 antibody used at a concentration of 1.0  $\mu$ g/ml against Rat Brain Lysate