

Datasheet for ABIN928049
anti-SLC05A1 antibody (Middle Region)



[Go to Product page](#)

1 Image

Overview

Quantity:	100 µL
Target:	SLC05A1
Binding Specificity:	Middle Region
Reactivity:	Human
Host:	Rabbit
Clonality:	Polyclonal
Conjugate:	This SLC05A1 antibody is un-conjugated
Application:	Western Blotting (WB)

Product Details

Immunogen:	SLC05 A1 antibody was raised in rabbit using the middle region of SLC05 1 as the immunogen
Purification:	Purified

Target Details

Target:	SLC05A1
Alternative Name:	SLC05A1 (SLC05A1 Products)
Background:	This gene encodes a 12 transmembrane domain protein that is a member of the solute carrier organic anion transporter superfamily. Alternative splicing results in multiple transcript variants. Synonyms: Polyclonal SLC05A1 antibody, Anti-SLC05A1 antibody, solute carrier organic anion transporter family, member 5A1 antibody, FLJ39560 antibody, OATP-J antibody, OATP5A1 antibody, OATPRP4 antibody, SLC21A15 antibody.

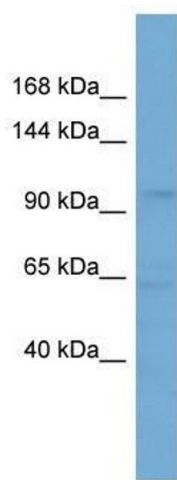
Application Details

Application Notes:	WB: 0.2-1 µg/mL Optimal conditions should be determined by the investigator.
Comment:	SLC05A1 Blocking Peptide, catalog no. 33R-6802, is also available for use as a blocking control in assays to test for specificity of this SLC05A1 antibody
Restrictions:	For Research Use only

Handling

Format:	Lyophilized
Concentration:	Lot specific
Buffer:	Lyophilized powder. Add 50 µL of distilled water. Final antibody concentration is 1 mg/mL in PBS buffer.
Handling Advice:	Avoid repeated freeze/thaw cycles.
Storage:	4 °C/-20 °C
Storage Comment:	Store at 4 °C, following reconstitution, aliquot and store at -20 °C.

Images



Western Blotting

Image 1. SLC05A1 antibody used at 0.2-1 µg/ml to detect target protein.