

Datasheet for ABIN928050
anti-SLC35A4 antibody (Middle Region)



[Go to Product page](#)

1 Image

Overview

Quantity:	100 µL
Target:	SLC35A4
Binding Specificity:	Middle Region
Reactivity:	Human
Host:	Rabbit
Clonality:	Polyclonal
Conjugate:	This SLC35A4 antibody is un-conjugated
Application:	Western Blotting (WB)

Product Details

Immunogen:	SLC35 A4 antibody was raised in rabbit using the middle region of SLC35 4 as the immunogen
Purification:	Purified

Target Details

Target:	SLC35A4
Alternative Name:	SLC35A4 (SLC35A4 Products)
Background:	The function of this protein remains unknown. Synonyms: Polyclonal SLC35A4 antibody, Anti-SLC35A4 antibody, solute carrier family 35, member A4 antibody, MGC2541 antibody.

Application Details

Application Notes: WB: 0.2-1 µg/mL
Optimal conditions should be determined by the investigator.

Restrictions: For Research Use only

Handling

Format: Lyophilized

Concentration: Lot specific

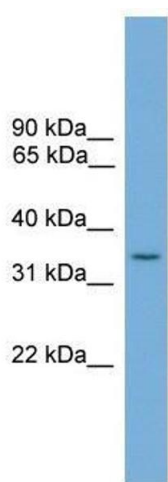
Buffer: Lyophilized powder. Add 50 µL of distilled water. Final antibody concentration is 1 mg/mL in PBS buffer.

Handling Advice: Avoid repeated freeze/thaw cycles.

Storage: 4 °C/-20 °C

Storage Comment: Store at 4 °C, following reconstitution, aliquot and store at -20 °C.

Images



Western Blotting

Image 1. SLC35A4 antibody used at 0.2-1 ug/ml to detect target protein.