

Datasheet for ABIN928057
anti-ATP4b antibody (C-Term)



[Go to Product page](#)

1 Image

Overview

Quantity:	100 µL
Target:	ATP4b
Binding Specificity:	C-Term
Reactivity:	Human, Rat
Host:	Rabbit
Clonality:	Polyclonal
Conjugate:	This ATP4b antibody is un-conjugated
Application:	Western Blotting (WB)

Product Details

Immunogen:	Atp4 b antibody was raised in rabbit using the C terminal of Atp4 as the immunogen
Cross-Reactivity:	Rat (Rattus)
Purification:	Purified

Target Details

Target:	ATP4b
Alternative Name:	Atp4b (ATP4b Products)
Background:	The function of Atp4b remains unknown. Synonyms: Polyclonal Atp4b antibody, Anti-Atp4b antibody, ATPase, H ⁺ /K ⁺ exchanging, beta polypeptide antibody, S76401S1 antibody, Atp4b antibody.

Target Details

Pathways: [Proton Transport](#)

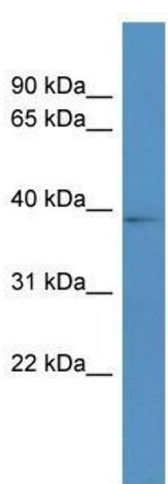
Application Details

Application Notes:	WB: 0.2-1 µg/mL Optimal conditions should be determined by the investigator.
Comment:	Atp4b Blocking Peptide, catalog no. 33R-7677, is also available for use as a blocking control in assays to test for specificity of this Atp4b antibody
Restrictions:	For Research Use only

Handling

Format:	Lyophilized
Concentration:	Lot specific
Buffer:	Lyophilized powder. Add 50 µL of distilled water. Final antibody concentration is 1 mg/mL in PBS buffer.
Handling Advice:	Avoid repeated freeze/thaw cycles.
Storage:	4 °C/-20 °C
Storage Comment:	Store at 4 °C, following reconstitution, aliquot and store at -20 °C.

Images



Western Blotting

Image 1. Atp4b antibody used at 0.2-1 ug/ml to detect target protein.