

Datasheet for ABIN928060
anti-ATP11C antibody (C-Term)



[Go to Product page](#)

1 Image

Overview

Quantity:	100 µL
Target:	ATP11C
Binding Specificity:	C-Term
Reactivity:	Human, Mouse
Host:	Rabbit
Clonality:	Polyclonal
Conjugate:	This ATP11C antibody is un-conjugated
Application:	Western Blotting (WB)

Product Details

Immunogen:	Atp11 c antibody was raised in rabbit using the C terminal of Atp11 as the immunogen
Cross-Reactivity:	Mouse (Murine)
Purification:	Purified

Target Details

Target:	ATP11C
Alternative Name:	Atp11c (ATP11C Products)
Background:	The function of Atp11c remains unknown. Synonyms: Polyclonal Atp11c antibody, Anti-Atp11c antibody, ATPase, class VI, type 11C antibody, A330005H02Rik antibody, AI315324 antibody, Ig antibody, MGC117487 antibody.

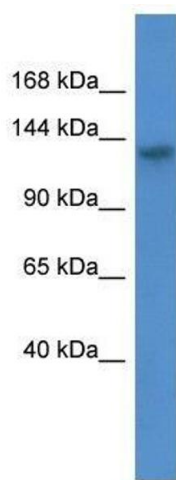
Application Details

Application Notes:	WB: 0.2-1 µg/mL Optimal conditions should be determined by the investigator.
Comment:	Atp11c Blocking Peptide, catalog no. 33R-3401, is also available for use as a blocking control in assays to test for specificity of this Atp11c antibody
Restrictions:	For Research Use only

Handling

Format:	Lyophilized
Concentration:	Lot specific
Buffer:	Lyophilized powder. Add 50 µL of distilled water. Final antibody concentration is 1 mg/mL in PBS buffer.
Handling Advice:	Avoid repeated freeze/thaw cycles.
Storage:	4 °C/-20 °C
Storage Comment:	Store at 4 °C, following reconstitution, aliquot and store at -20 °C.

Images



Western Blotting

Image 1. Atp11c antibody used at 0.2-1 ug/ml to detect target protein.