

Datasheet for ABIN928063  
**anti-Anoctamin 6 antibody (Middle Region)**



[Go to Product page](#)

1 Image

## Overview

Quantity:	100 µL
Target:	Anoctamin 6 (ANO6)
Binding Specificity:	Middle Region
Reactivity:	Human, Mouse
Host:	Rabbit
Clonality:	Polyclonal
Conjugate:	This Anoctamin 6 antibody is un-conjugated
Application:	Western Blotting (WB)

## Product Details

Immunogen:	Ano6 antibody was raised in rabbit using the middle region of Ano6 as the immunogen
Cross-Reactivity:	Mouse (Murine)
Purification:	Purified

## Target Details

Target:	Anoctamin 6 (ANO6)
Alternative Name:	Ano6 ( <a href="#">ANO6 Products</a> )
Background:	Ano6 may act as a calcium-activated chloride channel By similarity. It is essential for calcium-dependent exposure of phosphatidylserine on the surface of activated platelets, a process necessary to trigger the clotting system. Synonyms: Polyclonal Ano6 antibody, Anti-Ano6 antibody, anoctamin 6 antibody, 2900059G15Rik antibody, AA407480 antibody, AW554778

## Target Details

antibody, F730003B03Rik antibody, Tmem16f antibody.

Pathways: [SARS-CoV-2 Protein Interactome](#)

## Application Details

Application Notes: Optimal conditions should be determined by the investigator.

Comment: Ano6 Blocking Peptide, catalog no. 33R-8908, is also available for use as a blocking control in assays to test for specificity of this Ano6 antibody

Restrictions: For Research Use only

## Handling

Format: Lyophilized

Concentration: Lot specific

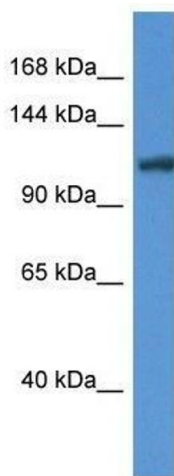
Buffer: Lyophilized powder. Add 50  $\mu$ L of distilled water. Final antibody concentration is 1 mg/mL in PBS buffer.

Handling Advice: Avoid repeated freeze/thaw cycles.

Storage: 4  $^{\circ}$ C/-20  $^{\circ}$ C

Storage Comment: Store at 4  $^{\circ}$ C, following reconstitution, aliquot and store at -20  $^{\circ}$ C.

## Images



### Western Blotting

**Image 1.** Western Blot showing Ano6 antibody used at a concentration of 1.0  $\mu$ g/ml against Mouse Liver Lysate