

Datasheet for ABIN928072  
**anti-SDK1 antibody (Middle Region)**



[Go to Product page](#)

1 Image

## Overview

Quantity:	100 µL
Target:	SDK1
Binding Specificity:	Middle Region
Reactivity:	Human
Host:	Rabbit
Clonality:	Polyclonal
Conjugate:	This SDK1 antibody is un-conjugated
Application:	Western Blotting (WB)

## Product Details

Immunogen:	SDK1 antibody was raised in rabbit using the middle region of SDK1 as the immunogen
Purification:	Purified

## Target Details

Target:	SDK1
Alternative Name:	SDK1 ( <a href="#">SDK1 Products</a> )
Background:	SDK1 is a cell adhesion protein that guides axonal terminals to specific synapses in developing neurons. Dysregulation of this protein may play an important role in podocyte dysfunction in HIV-associated nephropathy. Synonyms: Polyclonal SDK1 antibody, Anti-SDK1 antibody, sidekick homolog 1, cell adhesion molecule, chicken antibody, FLJ31425 antibody.

## Application Details

Application Notes: WB: 0.2-1 µg/mL  
Optimal conditions should be determined by the investigator.

Restrictions: For Research Use only

## Handling

Format: Lyophilized

Concentration: Lot specific

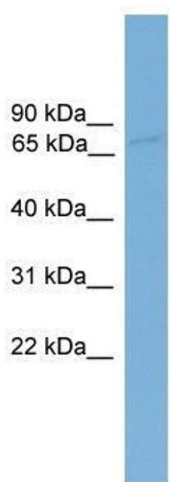
Buffer: Lyophilized powder. Add 50 µL of distilled water. Final antibody concentration is 1 mg/mL in PBS buffer.

Handling Advice: Avoid repeated freeze/thaw cycles.

Storage: 4 °C/-20 °C

Storage Comment: Store at 4 °C, following reconstitution, aliquot and store at -20 °C.

## Images



### Western Blotting

**Image 1.** SDK1 antibody used at 0.2-1 ug/ml to detect target protein.