

Datasheet for ABIN928084  
**anti-SSR2 antibody (C-Term)**



[Go to Product page](#)

1 Image

## Overview

Quantity:	100 µL
Target:	SSR2
Binding Specificity:	C-Term
Reactivity:	Human, Mouse
Host:	Rabbit
Clonality:	Polyclonal
Conjugate:	This SSR2 antibody is un-conjugated
Application:	Western Blotting (WB)

## Product Details

Immunogen:	Ssr2 antibody was raised in rabbit using the C terminal of Ssr2 as the immunogen
Cross-Reactivity:	Mouse (Murine)
Purification:	Purified

## Target Details

Target:	SSR2
Alternative Name:	Ssr2 ( <a href="#">SSR2 Products</a> )
Background:	TRAP proteins are part of a complex whose function is to bind calcium to the ER membrane and thereby regulate the retention of ER resident proteins. Synonyms: Polyclonal Ssr2 antibody, Anti-Ssr2 antibody, signal sequence receptor, beta antibody, 1500032E05Rik antibody, AI315033 antibody, AU020133 antibody, TLAP antibody, TRAPB antibody, TRAPbeta antibody.

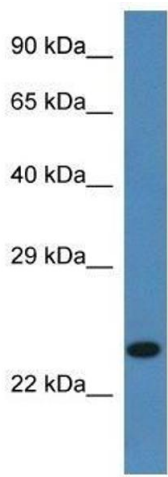
## Application Details

Application Notes:	Optimal conditions should be determined by the investigator.
Comment:	Ssr2 Blocking Peptide, catalog no. 33R-4244, is also available for use as a blocking control in assays to test for specificity of this Ssr2 antibody
Restrictions:	For Research Use only

## Handling

Format:	Lyophilized
Concentration:	Lot specific
Buffer:	Lyophilized powder. Add 50 $\mu$ L of distilled water. Final antibody concentration is 1 mg/mL in PBS buffer.
Handling Advice:	Avoid repeated freeze/thaw cycles.
Storage:	4 °C/-20 °C
Storage Comment:	Store at 4 °C, following reconstitution, aliquot and store at -20 °C.

## Images



### Western Blotting

**Image 1.** Western Blot showing Ssr2 antibody used at a concentration of 1.0 ug/ml against Mouse Pancreas Lysate