

Datasheet for ABIN928086  
**anti-SCG2 antibody (Middle Region)**



[Go to Product page](#)

1 Image

## Overview

|                      |                                     |
|----------------------|-------------------------------------|
| Quantity:            | 100 µL                              |
| Target:              | SCG2                                |
| Binding Specificity: | Middle Region                       |
| Reactivity:          | Human, Rat                          |
| Host:                | Rabbit                              |
| Clonality:           | Polyclonal                          |
| Conjugate:           | This SCG2 antibody is un-conjugated |
| Application:         | Western Blotting (WB)               |

## Product Details

|                   |   |
|-------------------|---|
| Immunogen:        | Scg2 antibody was raised in rabbit using the middle region of Scg2 as the immunogen |
| Cross-Reactivity: | Rat (Rattus)  |
| Purification:     | Purified  |

## Target Details

|                   |   |
|-------------------|---|
| Target:           | SCG2  |
| Alternative Name: | Scg2 ( <a href="#">SCG2 Products</a> )  |
| Background:       | Scg2 is a member of the chromogranin family of proteins that are localized to large dense core vesicles and are endoproteolytically processed to smaller neuropeptides. Synonyms: Polyclonal Scg2 antibody, Anti-Scg2 antibody, secretogranin II, chromogranin C antibody, Chcg antibody. |

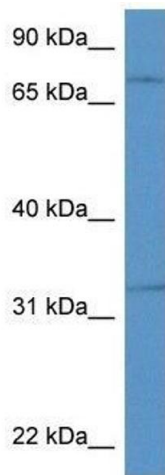
## Application Details

|                    |  |
|--------------------|--|
| Application Notes: | Optimal conditions should be determined by the investigator.   |
| Comment:           | Scg2 Blocking Peptide, catalog no. 33R-1991, is also available for use as a blocking control in assays to test for specificity of this Scg2 antibody |
| Restrictions:      | For Research Use only  |

## Handling

|                  |   |
|------------------|---|
| Format:          | Lyophilized   |
| Concentration:   | Lot specific  |
| Buffer:          | Lyophilized powder. Add 50 $\mu$ L of distilled water. Final antibody concentration is 1 mg/mL in PBS buffer. |
| Handling Advice: | Avoid repeated freeze/thaw cycles.  |
| Storage:         | 4 °C/-20 °C   |
| Storage Comment: | Store at 4 °C, following reconstitution, aliquot and store at -20 °C.   |

## Images



### Western Blotting

**Image 1.** Western Blot showing Scg2 antibody used at a concentration of 1.0  $\mu$ g/ml against Rat Liver Lysate