

Datasheet for ABIN928087
anti-B3GALT2 antibody (C-Term)



[Go to Product page](#)

1 Image

Overview

| | |
|----------------------|--|
| Quantity: | 100 µL |
| Target: | B3GALT2 |
| Binding Specificity: | C-Term |
| Reactivity: | Human, Mouse |
| Host: | Rabbit |
| Clonality: | Polyclonal |
| Conjugate: | This B3GALT2 antibody is un-conjugated |
| Application: | Western Blotting (WB) |

Product Details

| | |
|-------------------|---|
| Immunogen: | B3 galt2 antibody was raised in rabbit using the C terminal of B3 alt2 as the immunogen |
| Cross-Reactivity: | Mouse (Murine) |
| Purification: | Purified |

Target Details

| | |
|-------------------|---|
| Target: | B3GALT2 |
| Alternative Name: | B3galt2 (B3GALT2 Products) |
| Background: | B3galt2 is beta-1,3-galactosyltransferase that transfers galactose from UDP-galactose to substrates with a terminal beta-N-acetylglucosamine (beta-GlcNAc) residue. B3galt2 can also utilize substrates with a terminal galactose residue, albeit with lower efficiency. B3galt2 is involved in the biosynthesis of the carbohydrate moieties of glycolipids and glycoproteins. |

Target Details

Synonyms: Polyclonal B3galt2 antibody, Anti-B3galt2 antibody, UDP-Gal:betaGlcNAc beta 1,3-galactosyltransferase, polypeptide 2 antibody.

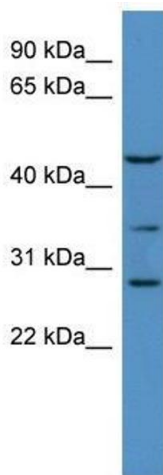
Application Details

| | |
|--------------------|--|
| Application Notes: | WB: 0.2-1 µg/mL Optimal conditions should be determined by the investigator. |
| Comment: | B3galt2 Blocking Peptide, catalog no. 33R-8241, is also available for use as a blocking control in assays to test for specificity of this B3galt2 antibody |
| Restrictions: | For Research Use only |

Handling

| | |
|------------------|--|
| Format: | Lyophilized |
| Concentration: | Lot specific |
| Buffer: | Lyophilized powder. Add 50 µL of distilled water. Final antibody concentration is 1 mg/mL in PBS buffer. |
| Handling Advice: | Avoid repeated freeze/thaw cycles. |
| Storage: | 4 °C/-20 °C |
| Storage Comment: | Store at 4 °C, following reconstitution, aliquot and store at -20 °C. |

Images



Western Blotting

Image 1. B3galt2 antibody used at 0.2-1 ug/ml to detect target protein.