

Datasheet for ABIN928090

**anti-ALDH4A1 antibody (N-Term)**[Go to Product page](#)**1** Image

## Overview

Quantity:	100 µL
Target:	ALDH4A1
Binding Specificity:	N-Term
Reactivity:	Human, Rat
Host:	Rabbit
Clonality:	Polyclonal
Conjugate:	This ALDH4A1 antibody is un-conjugated
Application:	Western Blotting (WB)

## Product Details

Immunogen:	Aldh4 a1 antibody was raised in rabbit using the N terminal of Aldh4 1 as the immunogen
Cross-Reactivity:	Rat (Rattus)
Purification:	Purified

## Target Details

Target:	ALDH4A1
Alternative Name:	Aldh4a1 ( <a href="#">ALDH4A1 Products</a> )
Background:	Aldh4a1 is responsible for irreversible conversion of delta-1-pyrroline-5-carboxylate (P5C), derived either from proline or ornithine, to glutamate. This is a necessary step in the pathway interconnecting the urea and tricarboxylic acid cycles. The preferred substrate is glutamic gamma-semialdehyde, other substrates include succinic, glutaric and adipic semialdehydes.

## Target Details

Synonyms: Polyclonal Aldh4a1 antibody, Anti-Aldh4a1 antibody, aldehyde dehydrogenase 4 family, member A1 antibody, Aldh4a1 antibody.

Pathways: [Monocarboxylic Acid Catabolic Process](#)

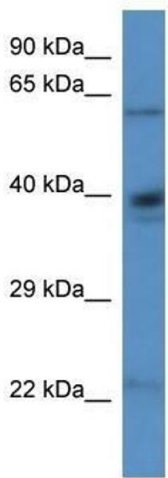
## Application Details

Application Notes:	Optimal conditions should be determined by the investigator.
Comment:	Aldh4a1 Blocking Peptide, catalog no. 33R-3562, is also available for use as a blocking control in assays to test for specificity of this Aldh4a1 antibody
Restrictions:	For Research Use only

## Handling

Format:	Lyophilized
Concentration:	Lot specific
Buffer:	Lyophilized powder. Add 50 µL of distilled water. Final antibody concentration is 1 mg/mL in PBS buffer.
Handling Advice:	Avoid repeated freeze/thaw cycles.
Storage:	4 °C/-20 °C
Storage Comment:	Store at 4 °C, following reconstitution, aliquot and store at -20 °C.

## Images



**Western Blotting**

**Image 1.** Western Blot showing Aldh4a1 antibody used at a concentration of 1.0 ug/ml against Rat Kidney Lysate