

Datasheet for ABIN928093
anti-CYYR1 antibody (Middle Region)



[Go to Product page](#)

1 Image

Overview

Quantity:	100 µL
Target:	CYYR1
Binding Specificity:	Middle Region
Reactivity:	Human, Rat
Host:	Rabbit
Clonality:	Polyclonal
Conjugate:	This CYYR1 antibody is un-conjugated
Application:	Western Blotting (WB)

Product Details

Immunogen:	Cyyr1 antibody was raised in rabbit using the middle region of Cyyr1 as the immunogen
Cross-Reactivity:	Rat (Rattus)
Purification:	Purified

Target Details

Target:	CYYR1
Alternative Name:	Cyyr1 (CYYR1 Products)
Background:	The function of Cyyr1 remains unknown. Synonyms: Polyclonal Cyyr1 antibody, Anti-Cyyr1 antibody, cysteine/tyrosine-rich 1 antibody, Cyyr1 antibody.

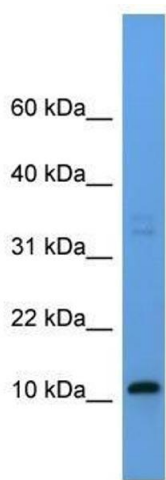
Application Details

Application Notes:	WB: 0.2-1 µg/mL Optimal conditions should be determined by the investigator.
Comment:	Cyrr1 Blocking Peptide, catalog no. 33R-3127, is also available for use as a blocking control in assays to test for specificity of this Cyrr1 antibody
Restrictions:	For Research Use only

Handling

Format:	Lyophilized
Concentration:	Lot specific
Buffer:	Lyophilized powder. Add 50 µL of distilled water. Final antibody concentration is 1 mg/mL in PBS buffer.
Handling Advice:	Avoid repeated freeze/thaw cycles.
Storage:	4 °C/-20 °C
Storage Comment:	Store at 4 °C, following reconstitution, aliquot and store at -20 °C.

Images



Western Blotting

Image 1. Western Blot showing Cyrr1 antibody used at a concentration of 1-2 µg/ml to detect its target protein.