

Datasheet for ABIN928102
anti-Malectin antibody (C-Term)



[Go to Product page](#)

1 Image

Overview

Quantity:	100 µL
Target:	Malectin (MLEC)
Binding Specificity:	C-Term
Reactivity:	Human
Host:	Rabbit
Clonality:	Polyclonal
Conjugate:	This Malectin antibody is un-conjugated
Application:	Western Blotting (WB)

Product Details

Immunogen:	KIAA0152 antibody was raised in rabbit using the C terminal of KIAA0152 as the immunogen
Purification:	Purified

Target Details

Target:	Malectin (MLEC)
Alternative Name:	KIAA0152 (MLEC Products)
Background:	KIAA0152 is a carbohydrate-binding protein with a strong ligand preference for Glc2-N-glycan. KIAA0152 may play a role in the early steps of protein N-glycosylation. Synonyms: Polyclonal KIAA0152 antibody, Anti-KIAA0152 antibody, malectin antibody, KIAA0152 antibody.

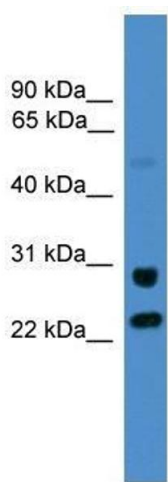
Application Details

Application Notes:	WB: 0.2-1 µg/mL Optimal conditions should be determined by the investigator.
Comment:	KIAA0152 Blocking Peptide, catalog no. 33R-9343, is also available for use as a blocking control in assays to test for specificity of this KIAA0152 antibody
Restrictions:	For Research Use only

Handling

Format:	Lyophilized
Concentration:	Lot specific
Buffer:	Lyophilized powder. Add 50 µL of distilled water. Final antibody concentration is 1 mg/mL in PBS buffer.
Handling Advice:	Avoid repeated freeze/thaw cycles.
Storage:	4 °C/-20 °C
Storage Comment:	Store at 4 °C, following reconstitution, aliquot and store at -20 °C.

Images



Western Blotting

Image 1. KIAA0152 antibody used at 0.2-1 ug/ml to detect target protein.