

Datasheet for ABIN928104
anti-Adam23 antibody (C-Term)



[Go to Product page](#)

1 Image

Overview

Quantity:	100 µL
Target:	Adam23
Binding Specificity:	C-Term
Reactivity:	Human, Mouse
Host:	Rabbit
Clonality:	Polyclonal
Conjugate:	This Adam23 antibody is un-conjugated
Application:	Western Blotting (WB)

Product Details

Immunogen:	Adam23 antibody was raised in rabbit using the C terminal of Adam23 as the immunogen
Cross-Reactivity:	Mouse (Murine)
Purification:	Purified

Target Details

Target:	Adam23
Alternative Name:	Adam23 (Adam23 Products)
Background:	Adam23 may play a role in cell-cell and cell-matrix interactions. This is a non-catalytic metalloprotease-like protein. Synonyms: Polyclonal Adam23 antibody, Anti-Adam23 antibody, a disintegrin and metalloproteinase domain 23 antibody, AW046396 antibody, MDC3 antibody.

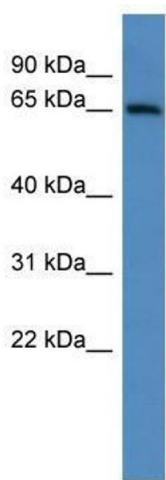
Application Details

Application Notes:	WB: 0.2-1 µg/mL Optimal conditions should be determined by the investigator.
Comment:	Adam23 Blocking Peptide, catalog no. 33R-6823, is also available for use as a blocking control in assays to test for specificity of this Adam23 antibody
Restrictions:	For Research Use only

Handling

Format:	Lyophilized
Concentration:	Lot specific
Buffer:	Lyophilized powder. Add 50 µL of distilled water. Final antibody concentration is 1 mg/mL in PBS buffer.
Handling Advice:	Avoid repeated freeze/thaw cycles.
Storage:	4 °C/-20 °C
Storage Comment:	Store at 4 °C, following reconstitution, aliquot and store at -20 °C.

Images



Western Blotting

Image 1. Adam23 antibody used at 0.2-1 ug/ml to detect target protein.