

Datasheet for ABIN928105 **anti-IL1RL2 antibody (N-Term)**



[Go to Product page](#)

1 Image

Overview

Quantity:	100 µL
Target:	IL1RL2
Binding Specificity:	N-Term
Reactivity:	Human
Host:	Rabbit
Clonality:	Polyclonal
Conjugate:	This IL1RL2 antibody is un-conjugated
Application:	Western Blotting (WB)

Product Details

Immunogen:	IL1 RL2 antibody was raised in rabbit using the N terminal of IL1 L2 as the immunogen
Purification:	Purified

Target Details

Target:	IL1RL2
Alternative Name:	IL1RL2 (IL1RL2 Products)
Background:	The protein encoded by this gene is a member of the interleukin 1 receptor family. An experiment with transient gene expression demonstrated that this receptor was incapable of binding to interleukin 1 alpha and interleukin 1 beta with high affinity. This gene and four other interleukin 1 receptor family genes, including interleukin 1 receptor, type I (IL1R1), interleukin 1 receptor, type II (IL1R2), interleukin 1 receptor-like 1 (IL1RL1), and interleukin 18 receptor 1

Target Details

(IL18R1), form a cytokine receptor gene cluster in a region mapped to chromosome 2q12.

Synonyms: Polyclonal IL1RL2 antibody, Anti-IL1RL2 antibody, interleukin 1 receptor-like 2 antibody, IL1R-rp2 antibody, IL1RRP2 antibody.

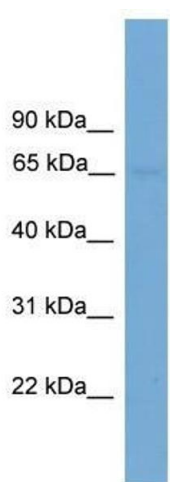
Application Details

Application Notes:	WB: 0.2-1 µg/mL Optimal conditions should be determined by the investigator.
Comment:	IL1RL2 Blocking Peptide, catalog no. 33R-3869, is also available for use as a blocking control in assays to test for specificity of this IL1RL2 antibody
Restrictions:	For Research Use only

Handling

Format:	Lyophilized
Concentration:	Lot specific
Buffer:	Lyophilized powder. Add 50 µL of distilled water. Final antibody concentration is 1 mg/mL in PBS buffer.
Handling Advice:	Avoid repeated freeze/thaw cycles.
Storage:	4 °C/-20 °C
Storage Comment:	Store at 4 °C, following reconstitution, aliquot and store at -20 °C.

Images



Western Blotting

Image 1. IL1RL2 antibody used at 0.2-1 ug/ml to detect target protein.