

Datasheet for ABIN928106 **anti-FCER1G antibody (N-Term)**



[Go to Product page](#)

1 Image

Overview

Quantity:	100 µL
Target:	FCER1G
Binding Specificity:	N-Term
Reactivity:	Human
Host:	Rabbit
Clonality:	Polyclonal
Conjugate:	This FCER1G antibody is un-conjugated
Application:	Western Blotting (WB)

Product Details

Immunogen:	FCER1 G antibody was raised in rabbit using the N terminal of FCER1 as the immunogen
Purification:	Purified

Target Details

Target:	FCER1G
Alternative Name:	FCER1G (FCER1G Products)
Background:	The high affinity IgE receptor is a key molecule involved in allergic reactions. It is a tetramer composed of 1 alpha, 1 beta, and 2 gamma chains. The gamma chains are also subunits of other Fc receptors. Synonyms: Polyclonal FCER1G antibody, Anti-FCER1G antibody, Fc fragment of IgE, high affinity I, receptor for, gamma polypeptide antibody, FCRG antibody.
Pathways:	Fc-epsilon Receptor Signaling Pathway , Regulation of Leukocyte Mediated Immunity , Positive

Target Details

Regulation of Immune Effector Process, Production of Molecular Mediator of Immune Response

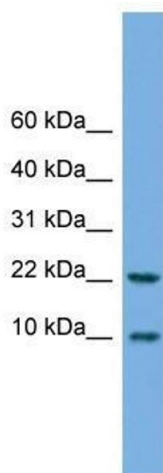
Application Details

Application Notes:	WB: 0.2-1 µg/mL Optimal conditions should be determined by the investigator.
Comment:	FCER1G Blocking Peptide, catalog no. 33R-6115, is also available for use as a blocking control in assays to test for specificity of this FCER1G antibody
Restrictions:	For Research Use only

Handling

Format:	Lyophilized
Concentration:	Lot specific
Buffer:	Lyophilized powder. Add 50 µL of distilled water. Final antibody concentration is 1 mg/mL in PBS buffer.
Handling Advice:	Avoid repeated freeze/thaw cycles.
Storage:	4 °C/-20 °C
Storage Comment:	Store at 4 °C, following reconstitution, aliquot and store at -20 °C.

Images



Western Blotting

Image 1. Western Blot showing FCER1G antibody used at a concentration of 1-2 ug/ml to detect its target protein.