

Datasheet for ABIN928107
anti-ADAM22 antibody (N-Term)



[Go to Product page](#)

1 Image

Overview

Quantity:	100 µL
Target:	ADAM22
Binding Specificity:	N-Term
Reactivity:	Human, Mouse
Host:	Rabbit
Clonality:	Polyclonal
Conjugate:	This ADAM22 antibody is un-conjugated
Application:	Western Blotting (WB)

Product Details

Immunogen:	Adam22 antibody was raised in rabbit using the N terminal of Adam22 as the immunogen
Cross-Reactivity:	Mouse (Murine)
Purification:	Purified

Target Details

Target:	ADAM22
Alternative Name:	Adam22 (ADAM22 Products)
Background:	Adam22 is a probable ligand for integrin in the brain. This is a non catalytic metalloprotease-like protein. Adam22 is involved in regulation of cell adhesion and spreading and in inhibition of cell proliferation. Adam22 is a neuronal receptor for LGI1. Synonyms: Polyclonal Adam22 antibody, Anti-Adam22 antibody, a disintegrin and metallopeptidase domain 22 antibody, 2900022I03Rik

Target Details

antibody, AI854032 antibody, MDC2 antibody.

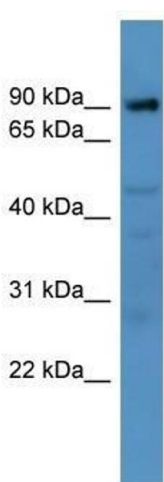
Application Details

Application Notes:	WB: 0.2-1 µg/mL Optimal conditions should be determined by the investigator.
Comment:	Adam22 Blocking Peptide, catalog no. 33R-1280, is also available for use as a blocking control in assays to test for specificity of this Adam22 antibody
Restrictions:	For Research Use only

Handling

Format:	Lyophilized
Concentration:	Lot specific
Buffer:	Lyophilized powder. Add 50 µL of distilled water. Final antibody concentration is 1 mg/mL in PBS buffer.
Handling Advice:	Avoid repeated freeze/thaw cycles.
Storage:	4 °C/-20 °C
Storage Comment:	Store at 4 °C, following reconstitution, aliquot and store at -20 °C.

Images



Western Blotting

Image 1. Western Blot showing Adam22 antibody used at a concentration of 1-2 ug/ml to detect its target protein.