

Datasheet for ABIN928117 **anti-PNPLA6 antibody (C-Term)**



[Go to Product page](#)

1 Image

Overview

Quantity:	100 µL
Target:	PNPLA6
Binding Specificity:	C-Term
Reactivity:	Human, Mouse
Host:	Rabbit
Clonality:	Polyclonal
Conjugate:	This PNPLA6 antibody is un-conjugated
Application:	Western Blotting (WB)

Product Details

Immunogen:	Pnpla6 antibody was raised in rabbit using the C terminal of Pnpla6 as the immunogen
Cross-Reactivity:	Mouse (Murine)
Purification:	Purified

Target Details

Target:	PNPLA6
Alternative Name:	Pnpla6 (PNPLA6 Products)
Background:	Phospholipase B deacylates intracellular phosphatidylcholine (PtdCho), generating glycerophosphocholine (GroPtdCho). This deacylation occurs at both sn-2 and sn-1 positions of PtdCho. Its specific chemical modification by certain organophosphorus (OP) compounds leads to distal axonopathy. Synonyms: Polyclonal Pnpla6 antibody, Anti-Pnpla6 antibody,

Target Details

patatin-like phospholipase domain containing 6 antibody, AI661849 antibody, MSws antibody, Nte antibody.

Pathways: [Ribonucleoside Biosynthetic Process](#)

Application Details

Application Notes: Optimal conditions should be determined by the investigator.

Comment: Pnpla6 Blocking Peptide, catalog no. 33R-1944, is also available for use as a blocking control in assays to test for specificity of this Pnpla6 antibody

Restrictions: For Research Use only

Handling

Format: Lyophilized

Concentration: Lot specific

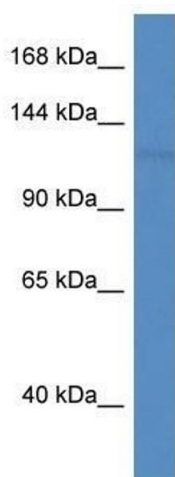
Buffer: Lyophilized powder. Add 50 μ L of distilled water. Final antibody concentration is 1 mg/mL in PBS buffer.

Handling Advice: Avoid repeated freeze/thaw cycles.

Storage: 4 °C/-20 °C

Storage Comment: Store at 4 °C, following reconstitution, aliquot and store at -20 °C.

Images



Western Blotting

Image 1. Western Blot showing Pnpla6 antibody used at a concentration of 1.0 μ g/ml against Mouse Heart Lysate