

Datasheet for ABIN928118 **anti-TMED1 antibody (N-Term)**



[Go to Product page](#)

1 Image

Overview

Quantity:	100 µL
Target:	TMED1
Binding Specificity:	N-Term
Reactivity:	Human, Rat
Host:	Rabbit
Clonality:	Polyclonal
Conjugate:	This TMED1 antibody is un-conjugated
Application:	Western Blotting (WB)

Product Details

Immunogen:	Tmed1 antibody was raised in rabbit using the N terminal of Tmed1 as the immunogen
Cross-Reactivity:	Rat (Rattus)
Purification:	Purified

Target Details

Target:	TMED1
Alternative Name:	Tmed1 (TMED1 Products)
Background:	Tmed1 have a potential role in protein trafficking. Synonyms: Polyclonal Tmed1 antibody, Anti-Tmed1 antibody, transmembrane emp24 protein transport domain containing 1 antibody, I11r111 antibody, MGC108769 antibody, Tmed1 antibody.

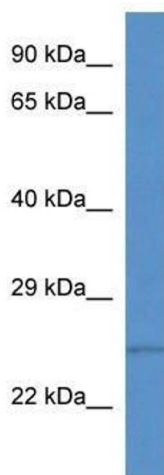
Application Details

Application Notes:	Optimal conditions should be determined by the investigator.
Comment:	Tmed1 Blocking Peptide, catalog no. 33R-2259, is also available for use as a blocking control in assays to test for specificity of this Tmed1 antibody
Restrictions:	For Research Use only

Handling

Format:	Lyophilized
Concentration:	Lot specific
Buffer:	Lyophilized powder. Add 50 μ L of distilled water. Final antibody concentration is 1 mg/mL in PBS buffer.
Handling Advice:	Avoid repeated freeze/thaw cycles.
Storage:	4 °C/-20 °C
Storage Comment:	Store at 4 °C, following reconstitution, aliquot and store at -20 °C.

Images



Western Blotting

Image 1. Western Blot showing Tmed1 antibody used at a concentration of 1.0 μ g/ml against Rat Lung Lysate