

Datasheet for ABIN928123
anti-GHITM antibody (Middle Region)



[Go to Product page](#)

1 Image

Overview

Quantity:	100 µL
Target:	GHITM
Binding Specificity:	Middle Region
Reactivity:	Human, Mouse
Host:	Rabbit
Clonality:	Polyclonal
Conjugate:	This GHITM antibody is un-conjugated
Application:	Western Blotting (WB)

Product Details

Immunogen:	Ghitm antibody was raised in rabbit using the middle region of Ghitm as the immunogen
Cross-Reactivity:	Mouse (Murine)
Purification:	Purified

Target Details

Target:	GHITM
Alternative Name:	Ghitm (GHITM Products)
Background:	Ghitm is required for the mitochondrial tubular network and cristae organization. Ghitm is involved in apoptotic release of cytochrome c. Synonyms: Polyclonal Ghitm antibody, Anti-Ghitm antibody, growth hormone inducible transmembrane protein antibody, 1010001P14Rik antibody, C77840 antibody, PTD010 antibody.

Target Details

Pathways: [SARS-CoV-2 Protein Interactome](#)

Application Details

Application Notes: WB: 0.2-1 µg/mL
Optimal conditions should be determined by the investigator.

Comment: Ghitm Blocking Peptide, catalog no. 33R-10035, is also available for use as a blocking control in assays to test for specificity of this Ghitm antibody

Restrictions: For Research Use only

Handling

Format: Lyophilized

Concentration: Lot specific

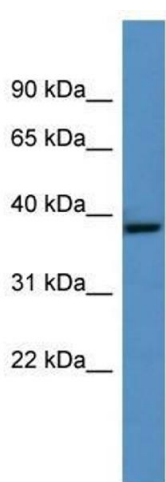
Buffer: Lyophilized powder. Add 50 µL of distilled water. Final antibody concentration is 1 mg/mL in PBS buffer.

Handling Advice: Avoid repeated freeze/thaw cycles.

Storage: 4 °C/-20 °C

Storage Comment: Store at 4 °C, following reconstitution, aliquot and store at -20 °C.

Images



Western Blotting

Image 1. Ghitm antibody used at 0.2-1 ug/ml to detect target protein.