

Datasheet for ABIN928124 **anti-BMP10 antibody (N-Term)**



[Go to Product page](#)

1 Image

Overview

Quantity:	100 µL
Target:	BMP10
Binding Specificity:	N-Term
Reactivity:	Human, Rat
Host:	Rabbit
Clonality:	Polyclonal
Conjugate:	This BMP10 antibody is un-conjugated
Application:	Western Blotting (WB)

Product Details

Immunogen:	Bmp10 antibody was raised in rabbit using the N terminal of Bmp10 as the immunogen
Cross-Reactivity:	Rat (Rattus)
Purification:	Purified

Target Details

Target:	BMP10
Alternative Name:	Bmp10 (BMP10 Products)
Background:	Bmp10 is required for maintaining the proliferative activity of embryonic cardiomyocytes by preventing premature activation of the negative cell cycle regulator CDKN1C/p57KIP and maintaining the required expression levels of cardiogenic factors such as MEF2C and NKX2-5. Bmp10 acts as a ligand for ACVRL1/ALK1, BMPR1A/ALK3 and BMPR1B/ALK6, leading to

Target Details

activation of SMAD1, SMAD5 and SMAD8 transcription factors. Bmp10 inhibits endothelial cell migration and growth. Synonyms: Polyclonal Bmp10 antibody, Anti-Bmp10 antibody, bone morphogenetic protein 10 antibody, Bmp10 antibody.

Pathways: [Hormone Activity](#), [Regulation of Muscle Cell Differentiation](#)

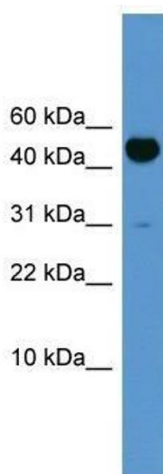
Application Details

Application Notes:	WB: 0.2-1 µg/mL Optimal conditions should be determined by the investigator.
Comment:	Bmp10 Blocking Peptide, catalog no. 33R-4366, is also available for use as a blocking control in assays to test for specificity of this Bmp10 antibody
Restrictions:	For Research Use only

Handling

Format:	Lyophilized
Concentration:	Lot specific
Buffer:	Lyophilized powder. Add 50 µL of distilled water. Final antibody concentration is 1 mg/mL in PBS buffer.
Handling Advice:	Avoid repeated freeze/thaw cycles.
Storage:	4 °C/-20 °C
Storage Comment:	Store at 4 °C, following reconstitution, aliquot and store at -20 °C.

Images



Western Blotting

Image 1. Western Blot showing Bmp10 antibody used at a concentration of 1-2 µg/ml to detect its target protein.