

Datasheet for ABIN928125
anti-PCDH11X antibody (Middle Region)



[Go to Product page](#)

1 Image

Overview

Quantity:	100 µL
Target:	PCDH11X (PCDH11)
Binding Specificity:	Middle Region
Reactivity:	Human, Mouse
Host:	Rabbit
Clonality:	Polyclonal
Conjugate:	This PCDH11X antibody is un-conjugated
Application:	Western Blotting (WB)

Product Details

Immunogen:	Pcdh11 x antibody was raised in rabbit using the middle region of Pcdh11 as the immunogen
Cross-Reactivity:	Mouse (Murine)
Purification:	Purified

Target Details

Target:	PCDH11X (PCDH11)
Alternative Name:	Pcdh11x (PCDH11 Products)
Background:	Pcdh11x is a potential calcium-dependent cell-adhesion protein. Synonyms: Polyclonal Pcdh11x antibody, Anti-Pcdh11x antibody, protocadherin 11 X-linked antibody, A230092L07Rik antibody, MGC141524 antibody, PCDHX antibody.

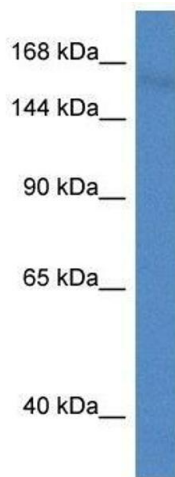
Application Details

Application Notes:	Optimal conditions should be determined by the investigator.
Comment:	Pcdh11x Blocking Peptide, catalog no. 33R-5239, is also available for use as a blocking control in assays to test for specificity of this Pcdh11x antibody
Restrictions:	For Research Use only

Handling

Format:	Lyophilized
Concentration:	Lot specific
Buffer:	Lyophilized powder. Add 50 μ L of distilled water. Final antibody concentration is 1 mg/mL in PBS buffer.
Handling Advice:	Avoid repeated freeze/thaw cycles.
Storage:	4 °C/-20 °C
Storage Comment:	Store at 4 °C, following reconstitution, aliquot and store at -20 °C.

Images



Western Blotting

Image 1. Western Blot showing Pcdh11x antibody used at a concentration of 1.0 μ g/ml against Mouse Brain Lysate