

Datasheet for ABIN928126
anti-PLA2G2E antibody (Middle Region)



[Go to Product page](#)

1 Image

Overview

Quantity:	100 µL
Target:	PLA2G2E
Binding Specificity:	Middle Region
Reactivity:	Human
Host:	Rabbit
Clonality:	Polyclonal
Conjugate:	This PLA2G2E antibody is un-conjugated
Application:	Western Blotting (WB)

Product Details

Immunogen:	PLA2 G2 antibody was raised in rabbit using the middle region of PLA2 2 as the immunogen
Purification:	Purified

Target Details

Target:	PLA2G2E
Alternative Name:	PLA2G2E (PLA2G2E Products)
Background:	PA2 catalyzes the calcium-dependent hydrolysis of the 2-acyl groups in 3-sn-phosphoglycerides. PLA2G2E has a preference for arachidonic-containing phospholipids. Synonyms: Polyclonal PLA2G2E antibody, Anti-PLA2G2E antibody, phospholipase A2, group IIE antibody.
Pathways:	Inositol Metabolic Process

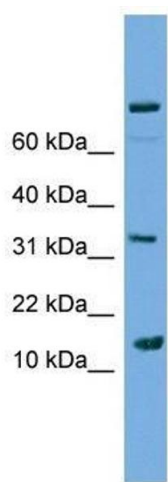
Application Details

Application Notes:	WB: 0.2-1 µg/mL Optimal conditions should be determined by the investigator.
Comment:	PLA2G2E Blocking Peptide, catalog no. 33R-3325, is also available for use as a blocking control in assays to test for specificity of this PLA2G2E antibody
Restrictions:	For Research Use only

Handling

Format:	Lyophilized
Concentration:	Lot specific
Buffer:	Lyophilized powder. Add 50 µL of distilled water. Final antibody concentration is 1 mg/mL in PBS buffer.
Handling Advice:	Avoid repeated freeze/thaw cycles.
Storage:	4 °C/-20 °C
Storage Comment:	Store at 4 °C, following reconstitution, aliquot and store at -20 °C.

Images



Western Blotting

Image 1. PLA2G2E antibody used at 2.5 µg/ml to detect target protein.