

Datasheet for ABIN928134

anti-C-Type Lectin Domain Family 1, Member B (CLEC1B) (N-Term) antibody[Go to Product page](#)**1** Image

Overview

Quantity:	100 µL
Target:	C-Type Lectin Domain Family 1, Member B (CLEC1B)
Binding Specificity:	N-Term
Reactivity:	Human, Mouse
Host:	Rabbit
Clonality:	Polyclonal
Conjugate:	Un-conjugated
Application:	Western Blotting (WB)

Product Details

Immunogen:	Clec1 b antibody was raised in rabbit using the N terminal of Clec1 as the immunogen
Cross-Reactivity:	Mouse (Murine)
Purification:	Purified

Target Details

Target:	C-Type Lectin Domain Family 1, Member B (CLEC1B)
Alternative Name:	Clec1b (CLEC1B Products)
Target Type:	Viral Protein
Background:	Clec1b acts as a receptor for the platelet-aggregating snake venom protein rhodocytin. Rhodocytin binding leads to tyrosine phosphorylation and this promotes the binding of spleen

Target Details

tyrosine kinase (Syk) and initiation of downstream tyrosine phosphorylation events and activation of PLC-gamma-2. Synonyms: Polyclonal Clec1b antibody, Anti-Clec1b antibody, C-type lectin domain family 1, member b antibody, 1810061113Rik antibody, AI465458 antibody, Clec-2 antibody, Clec2 antibody, mCLEC-2 antibody.

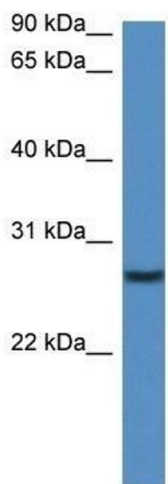
Application Details

Application Notes:	Optimal conditions should be determined by the investigator.
Comment:	Clec1b Blocking Peptide, catalog no. 33R-6320, is also available for use as a blocking control in assays to test for specificity of this Clec1b antibody
Restrictions:	For Research Use only

Handling

Format:	Lyophilized
Concentration:	Lot specific
Buffer:	Lyophilized powder. Add 50 μ L of distilled water. Final antibody concentration is 1 mg/mL in PBS buffer.
Handling Advice:	Avoid repeated freeze/thaw cycles.
Storage:	4 °C/-20 °C
Storage Comment:	Store at 4 °C, following reconstitution, aliquot and store at -20 °C.

Images



Western Blotting

Image 1. Western Blot showing Clec1b antibody used at a concentration of 1.0 μ g/ml against Mouse Pancreas Lysate