

## Datasheet for ABIN928142 **anti-CHST11 antibody (C-Term)**



[Go to Product page](#)

### 1 Image

#### Overview

Quantity:	100 µL
Target:	CHST11
Binding Specificity:	C-Term
Reactivity:	Human, Rat
Host:	Rabbit
Clonality:	Polyclonal
Conjugate:	This CHST11 antibody is un-conjugated
Application:	Western Blotting (WB)

#### Product Details

Immunogen:	Chst11 antibody was raised in rabbit using the C terminal of Chst11 as the immunogen
Cross-Reactivity:	Rat (Rattus)
Purification:	Purified

#### Target Details

Target:	CHST11
Alternative Name:	Chst11 ( <a href="#">CHST11 Products</a> )
Background:	Chst11 catalyzes the transfer of sulfate to position 4 of the N-acetylgalactosamine (GalNAc) residue of chondroitin. Chondroitin sulfate constitutes the predominant proteoglycan present in cartilage and is distributed on the surfaces of many cells and extracellular matrices. Chst11 can also sulfate Gal residues in desulfated dermatan sulfate. Chst11 preferentially sulfates in GlcA-

## Target Details

---

>GalNAc unit than in IdoA->GalNAc unit. Does not form 4, 6-di-O-sulfated GalNAc when chondroitin sulfate C is used as an acceptor. Synonyms: Polyclonal Chst11 antibody, Anti-Chst11 antibody, carbohydrate, chondroitin 4 sulfotransferase 11 antibody, C4ST1 antibody, Chst11 antibody.

Pathways: [Glycosaminoglycan Metabolic Process](#)

## Application Details

---

Application Notes: WB: 0.2-1 µg/mL  
Optimal conditions should be determined by the investigator.

Comment: Chst11 Blocking Peptide, catalog no. 33R-2875, is also available for use as a blocking control in assays to test for specificity of this Chst11 antibody

Restrictions: For Research Use only

## Handling

---

Format: Lyophilized

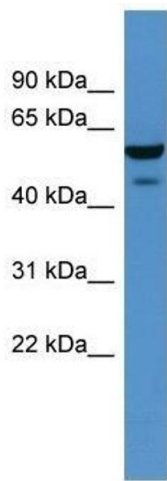
Concentration: Lot specific

Buffer: Lyophilized powder. Add 50 µL of distilled water. Final antibody concentration is 1 mg/mL in PBS buffer.

Handling Advice: Avoid repeated freeze/thaw cycles.

Storage: 4 °C/-20 °C

Storage Comment: Store at 4 °C, following reconstitution, aliquot and store at -20 °C.



### Western Blotting

**Image 1.** Chst11 antibody used at 0.2-1 ug/ml to detect target protein.