

Datasheet for ABIN928149
anti-ETV3L antibody (C-Term)



[Go to Product page](#)

1 Image

Overview

Quantity:	100 µL
Target:	ETV3L
Binding Specificity:	C-Term
Reactivity:	Human, Dog
Host:	Rabbit
Clonality:	Polyclonal
Conjugate:	This ETV3L antibody is un-conjugated
Application:	Western Blotting (WB)

Product Details

Immunogen:	ETV3 L antibody was raised in rabbit using the C terminal of ETV3 as the immunogen
Cross-Reactivity:	Dog (Canine)
Purification:	Purified

Target Details

Target:	ETV3L
Alternative Name:	ETV3L (ETV3L Products)
Background:	ETV3L is a transcriptional regulator, which belongs to the ETS family and contains 1 ETS DNA-binding domain. Synonyms: Polyclonal ETV3L antibody, Anti-ETV3L antibody, ets variant gene 3-like antibody, FLJ16478 antibody.

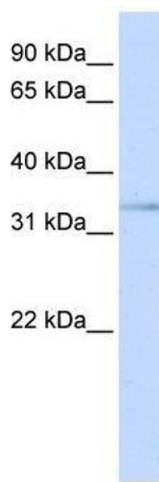
Application Details

Application Notes:	WB: 0.2-1 µg/mL Optimal conditions should be determined by the investigator.
Comment:	ETV3L Blocking Peptide, catalog no. 33R-5280, is also available for use as a blocking control in assays to test for specificity of this ETV3L antibody
Restrictions:	For Research Use only

Handling

Format:	Lyophilized
Concentration:	Lot specific
Buffer:	Lyophilized powder. Add 50 µL of distilled water. Final antibody concentration is 1 mg/mL in PBS buffer.
Handling Advice:	Avoid repeated freeze/thaw cycles.
Storage:	4 °C/-20 °C
Storage Comment:	Store at 4 °C, following reconstitution, aliquot and store at -20 °C.

Images



Western Blotting

Image 1. ETV3L antibody used at 0.2-1 ug/ml to detect target protein.