

Datasheet for ABIN928154
anti-DUXA antibody (Middle Region)



[Go to Product page](#)

1 Image

Overview

Quantity:	100 µL
Target:	DUXA
Binding Specificity:	Middle Region
Reactivity:	Human
Host:	Rabbit
Clonality:	Polyclonal
Conjugate:	This DUXA antibody is un-conjugated
Application:	Western Blotting (WB)

Product Details

Immunogen:	DUXA antibody was raised in rabbit using the middle region of DUXA as the immunogen
Purification:	Purified

Target Details

Target:	DUXA
Alternative Name:	DUXA (DUXA Products)
Background:	Homeobox genes encode DNA-binding proteins, many of which are thought to be involved in early embryonic development. Homeobox genes encode a DNA-binding domain of 60 to 63 amino acids referred to as the homeodomain. Synonyms: Polyclonal DUXA antibody, Anti-DUXA antibody, double homeobox A antibody.

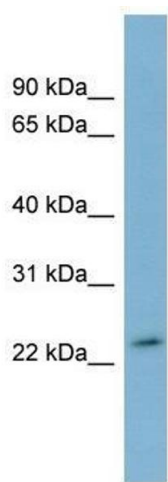
Application Details

Application Notes:	WB: 0.2-1 µg/mL Optimal conditions should be determined by the investigator.
Comment:	DUXA Blocking Peptide, catalog no. 33R-8761, is also available for use as a blocking control in assays to test for specificity of this DUXA antibody
Restrictions:	For Research Use only

Handling

Format:	Lyophilized
Concentration:	Lot specific
Buffer:	Lyophilized powder. Add 50 µL of distilled water. Final antibody concentration is 1 mg/mL in PBS buffer.
Handling Advice:	Avoid repeated freeze/thaw cycles.
Storage:	4 °C/-20 °C
Storage Comment:	Store at 4 °C, following reconstitution, aliquot and store at -20 °C.

Images



Western Blotting

Image 1. Western Blot showing DUXA antibody used at a concentration of 1-2 µg/ml to detect its target protein.