

Datasheet for ABIN928155
anti-EMX1 antibody (Middle Region)



[Go to Product page](#)

1 Image

Overview

Quantity:	100 µL
Target:	EMX1
Binding Specificity:	Middle Region
Reactivity:	Human, Mouse, Rat, Dog, Zebrafish (Danio rerio), Xenopus laevis, Drosophila melanogaster
Host:	Rabbit
Clonality:	Polyclonal
Conjugate:	This EMX1 antibody is un-conjugated
Application:	Western Blotting (WB)

Product Details

Immunogen:	EMX1 antibody was raised in rabbit using the middle region of EMX1 as the immunogen
Cross-Reactivity:	Mouse (Murine), Rat (Rattus), Fruit Fly (Drosophila melanogaster), Zebrafish (Brachydanio rerio), Dog (Canine), Frog
Purification:	Purified

Target Details

Target:	EMX1
Alternative Name:	EMX1 (EMX1 Products)
Background:	EMX1 belongs to the EMX homeobox family. It is a transcription factor, which in cooperation with EMX2, acts to generate the boundary between the roof and archipallium in the developing brain. The protein may function in combinations with OTX1/2 to specify cell fates in the developing

Target Details

central nervous system. Synonyms: Polyclonal EMX1 antibody, Anti-EMX1 antibody, empty spiracles homeobox 1 antibody.

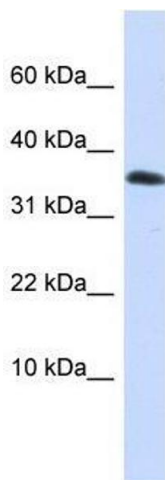
Application Details

Application Notes:	WB: 0.2-1 µg/mL Optimal conditions should be determined by the investigator.
Comment:	EMX1 Blocking Peptide, catalog no. 33R-1957, is also available for use as a blocking control in assays to test for specificity of this EMX1 antibody
Restrictions:	For Research Use only

Handling

Format:	Lyophilized
Concentration:	Lot specific
Buffer:	Lyophilized powder. Add 50 µL of distilled water. Final antibody concentration is 1 mg/mL in PBS buffer.
Handling Advice:	Avoid repeated freeze/thaw cycles.
Storage:	4 °C/-20 °C
Storage Comment:	Store at 4 °C, following reconstitution, aliquot and store at -20 °C.

Images



Western Blotting

Image 1. Western Blot showing EMX1 antibody used at a concentration of 1-2 µg/ml to detect its target protein.